

Cognos HELP and INFORMATION

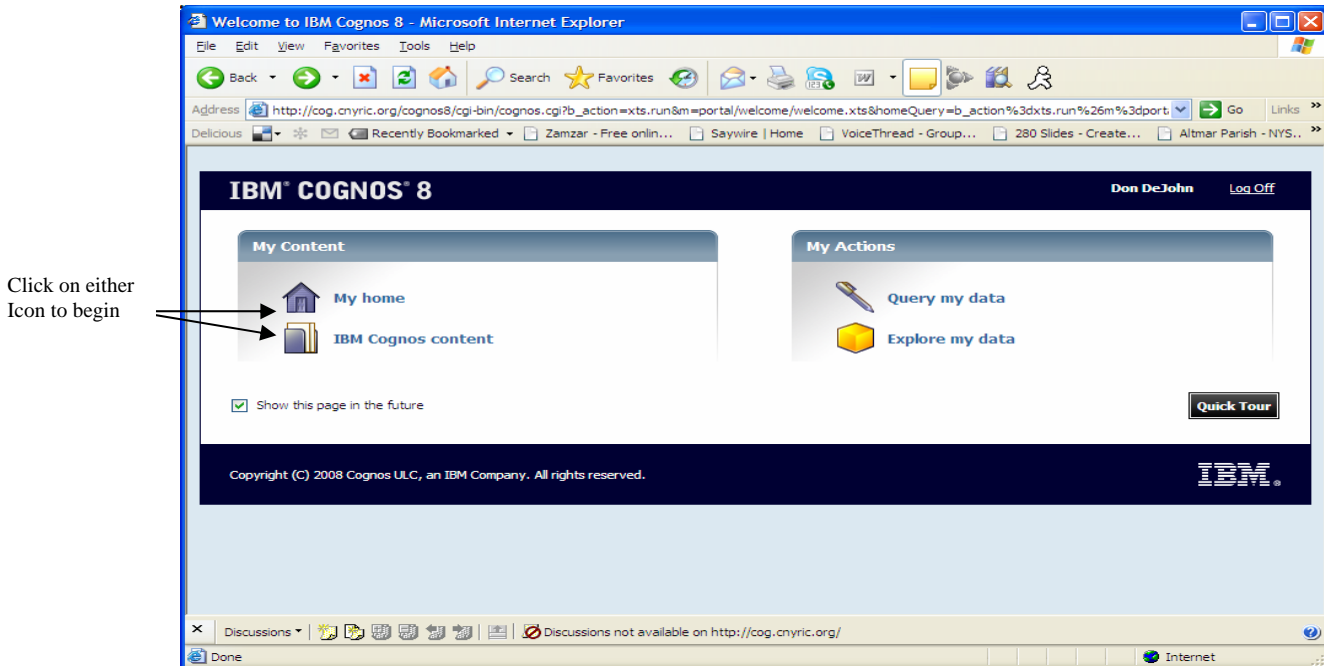
A new version of Cognos is coming in April 2009...

The new version is Cognos 8

The following pages have been prepared by the CNYRIC Data Warehouse Support Team to help you to learn more about what to expect in the new version of Cognos.

Central New York Regional Information Center

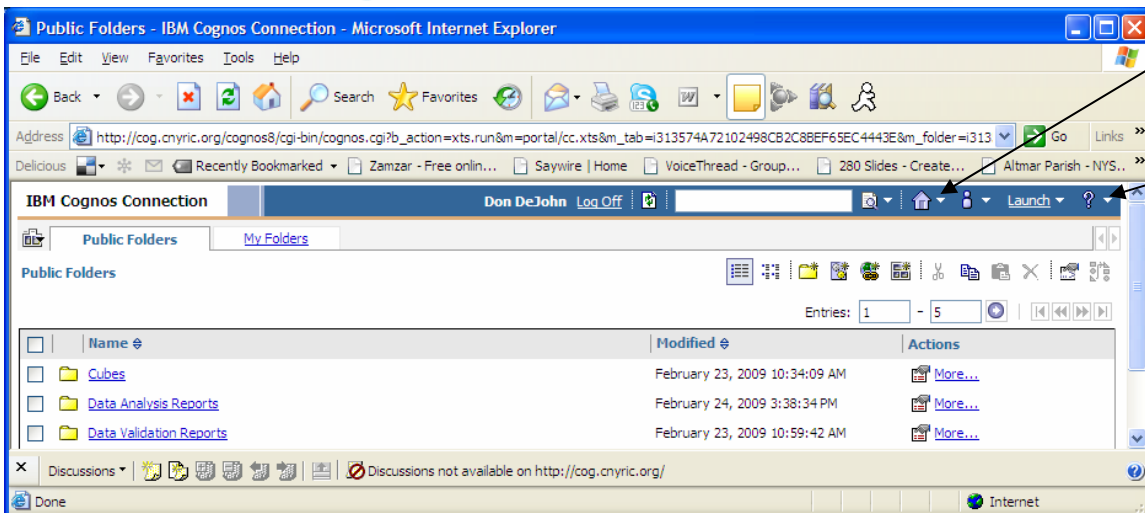
Cognos 8 is similar in most ways to the previous version of Cognos you were used to. It works essentially the same in each of the browsers you may be familiar with using. You may want to check the following website to check on whether Cognos supports your favorite web browser, <http://tinyurl.com/b59ovc>. The page below will be the page you see when you log into Cognos Cubes or ReportNet.



You can click on either the “My Home” or the “IBM Cognos Content” icons to begin. The next page you come to will be the Public Folder Tab, which contains the folder to your cubes and reports. Just click on one of the folder links and you’re on your way.

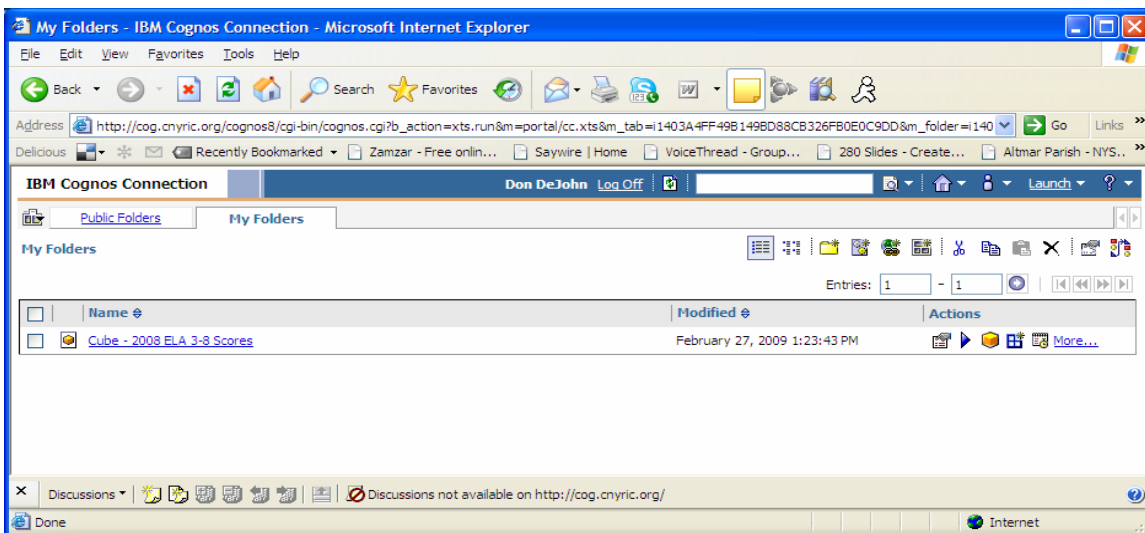
At any time, in either the Cubes or Reports, you can click on the Home Icon to go back to your folders, or the drop down next to the Help (?) icon for a quick tour of IBM Cognos Connection.

Central New York Regional Information Center



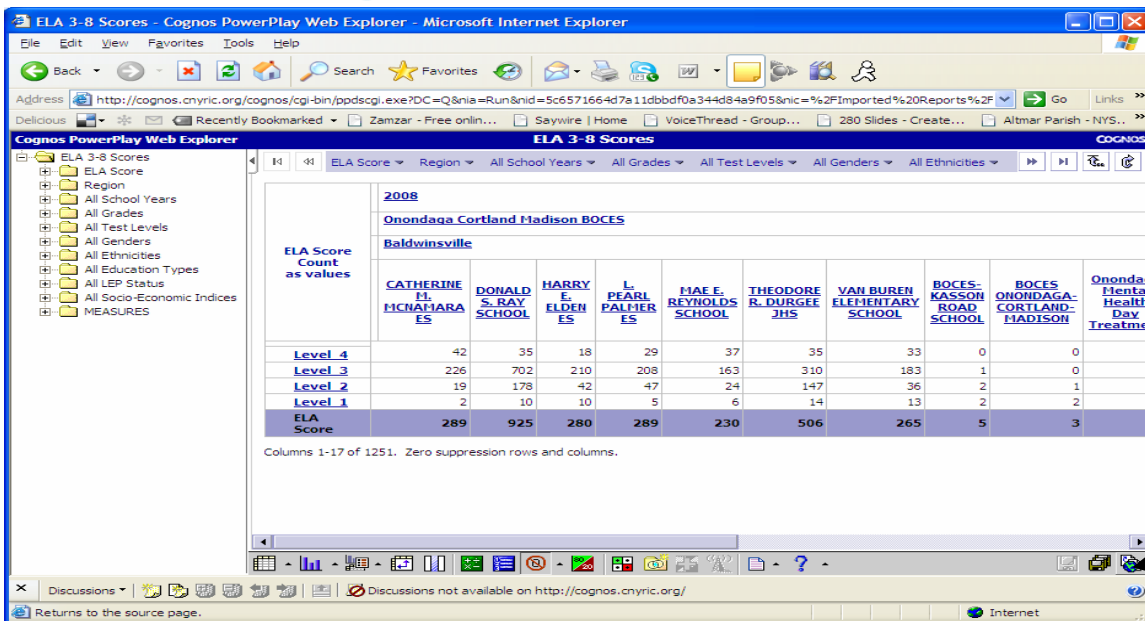
Key Cognos Cubes Changes

- Cognos is unable to transfer individual “Newsboxes” across to the new version. Therefore, if you currently have queries that you saved in the old version of the Cognos Cubes, please print the query or open it in Excel, so that you have a copy of the query in order to replicate it in the new version of Cognos Cubes. Also, the newsbox indicator used to be on the left side of the page, while in the new version, your saved queries will appear in the “MY FOLDERS” tab at the top of the IBM Cognos Connection page.



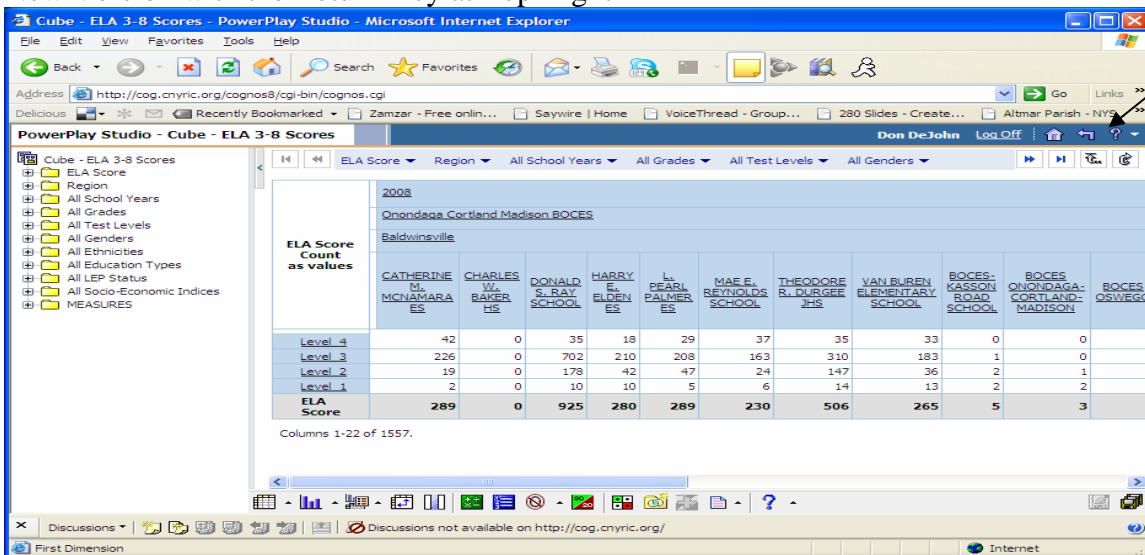
- One noticeable change between the versions is that the return icon which used to be a globe on the bottom right of the page in our old version, is gone, and has been replaced by a return key towards the top right of the page. The return icon takes you back to the selection page for your particular cube.

Central New York Regional Information Center



Old Version with Globe

New Version with the Return Key at Top Right

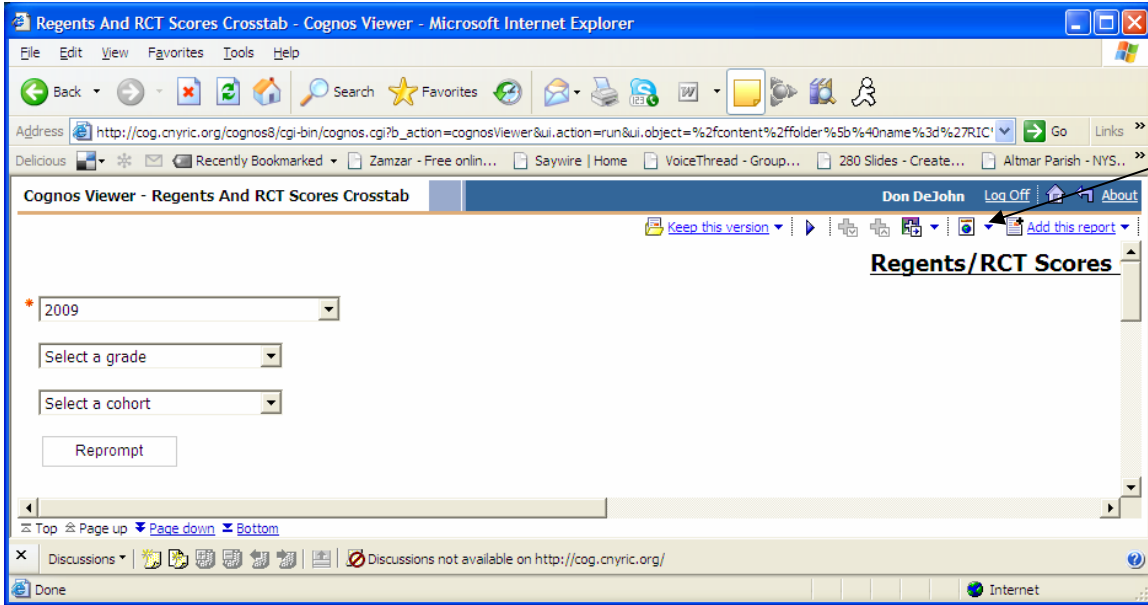


New Version with Return Key

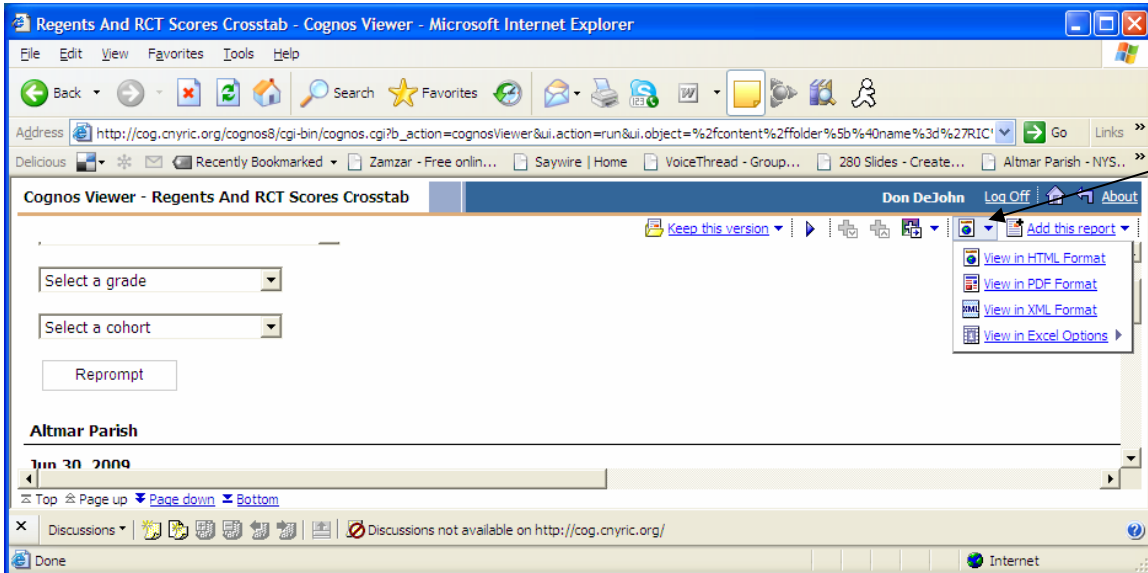
Key ReportNet Changes

- A noticeable difference is that the toolbars we have become familiar with at the top right, have changed. Instead of having individual icons for excel, pdf, etc., lined up next to each other, the commands are now stacked under a drop down.

Central New York Regional Information Center



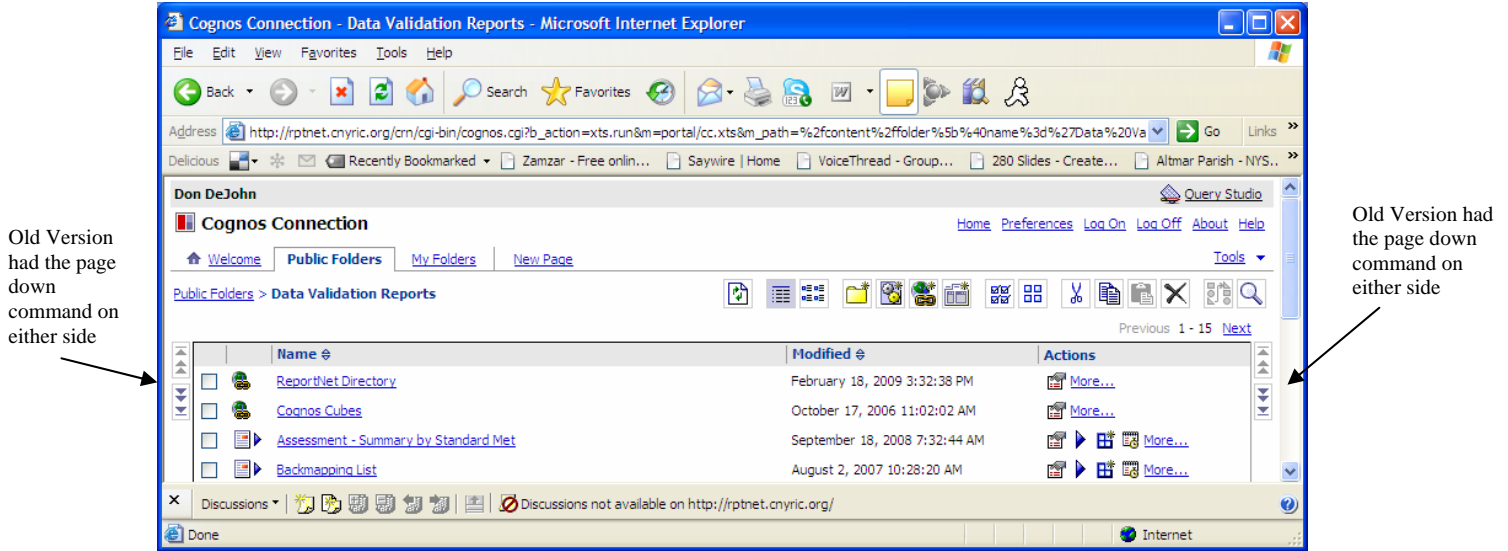
Click on the drop down for a list of options such as pdf, excel, csv, etc.



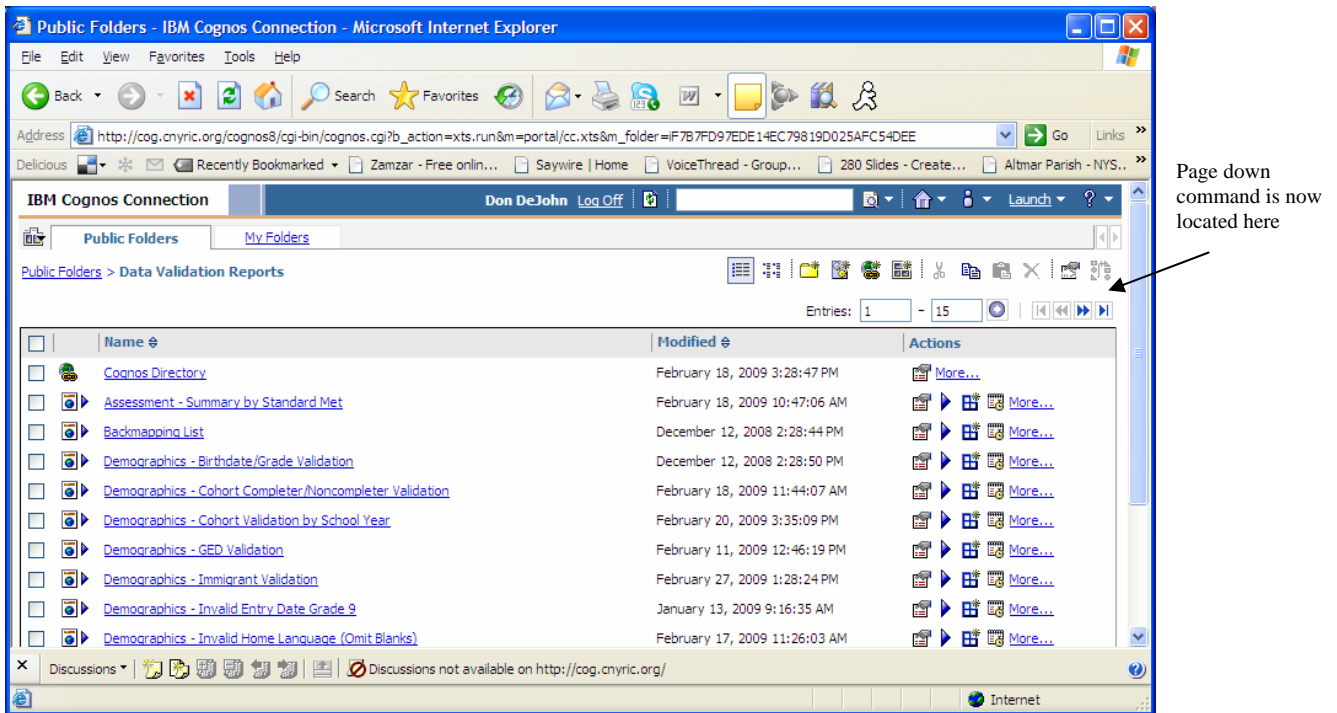
Individual Icons are now stacked within this drop down.

- Once you open up the validation reports, you'll notice that the page down commands which used to be on both the left and right side of the pages, are gone. They have been replaced with a single command about a third of the way from the top, towards the right side of the page.

Central New York Regional Information Center



In the new version, the page down command is located near the top right.



Those are the most significant changes between the old and new versions of Cognos. We hope you enjoy the new version of Cognos and please feel free to contact the Data Warehouse Department at CNYRIC if you have any questions.