

Program Features

Literacy and Language Development

Transitional Services: School to Work
or Post Secondary Education through
OCM BOCES

Curriculum aligned to the NYS
Common Core Standards

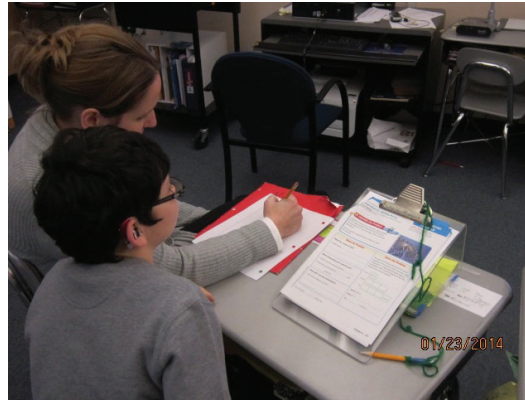
Extra Curricular Opportunities – Sports
Activities, Clubs, Social & Family Events,
Student Government, Music & Drama

Consumer Education/Awareness

Family Involvement/Connections

Working Relationship with Various
Community Agencies

Supporting English Language Learners (ELL)
Families and Students



For More Information, Contact:



Committed to Your Success

OCM BOCES Program for the
Deaf and Hard of Hearing

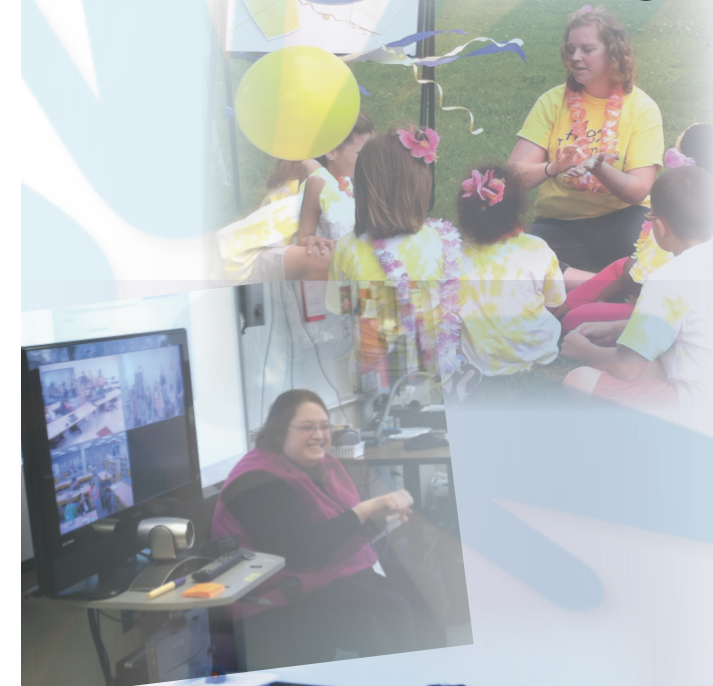
(315) 488-9034 (Voice)

(315) 487-3976 (Fax)

(315) 247-0967 (Text)



Program for the Deaf and Hard of Hearing



“Knowledge is Power”

-Helen Keller

The OCM BOCES Program for the Deaf and Hard of Hearing serves children with hearing loss who require support beyond the general education classroom setting.

The specialized staff works with students who utilize differing technology (Cochlear implant processors, hearing aids, iPads or assistive devices) and who use a variety of preferred communication modalities (oral with no knowledge/use of sign language, use of sign support, and exclusive use of sign language.)

As of June 2015

- 51% utilize cochlear implants
- 41% utilize hearing aids
- 8% do not use assistive technology
- 20% are English Language Learners (ELL) country of origin not in United States)

The K-12 Program is based in the Solway Union Free School District and has served 36 school districts in Central New York for more than 40 years.



Individual Educational Opportunities

Flexible Settings; including district based classrooms and OCM BOCES programs such as:

- Career Exploration/Development
- College Preparation – Regents or Local
- Career Development and Occupational Studies Certificate (CDOS)
- Career Training Education
- CTE Career Development Program
- School to Work opportunities

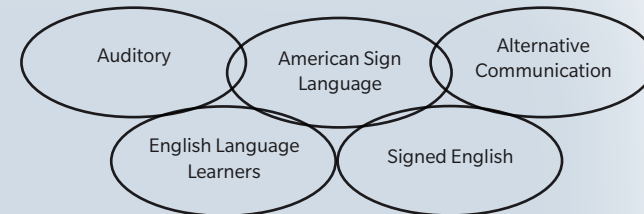
Based on the individual needs of the student, educational options range from placement in a general education classroom with support to a full classroom with a teacher of the deaf and hard of hearing.

Some of our students have additional learning challenges such as: language and other learning disabilities, cognitive challenges, sensory disorders, autism spectrum disorders, visual issues and processing disorders.

Access to Cutting Edge Technology

- Miniaturized State of the Art FM/DM Systems
- Assistive Devices (i.e., Videophone, Captioned Telephone)
- Augmentative Communication Devices
- Classroom Computers, Smart Boards, iPads and Polycoms

Individualized Communication



Specialized Program Staff

- Teachers of the Deaf & Hard of Hearing
- Special Education Teacher
- Sign Language Interpreters & Translators
- Audiologist
- Psychologist & Social Worker
- Speech & Language Therapists & Pathologists
- Specialized Teaching Assistants
- Occupational Therapy
- Physical Therapy
- Adaptive Physical Education
- Teachers of the Visually Impaired