

Blackline Masters

Incubation & Embryology

Kit #76

What Do You Know About Incubation	1
Make a Connection.....	2
Blank Egg Diagram.....	3
Embryology Record Sheet.....	4
“What’s Inside”	5-12

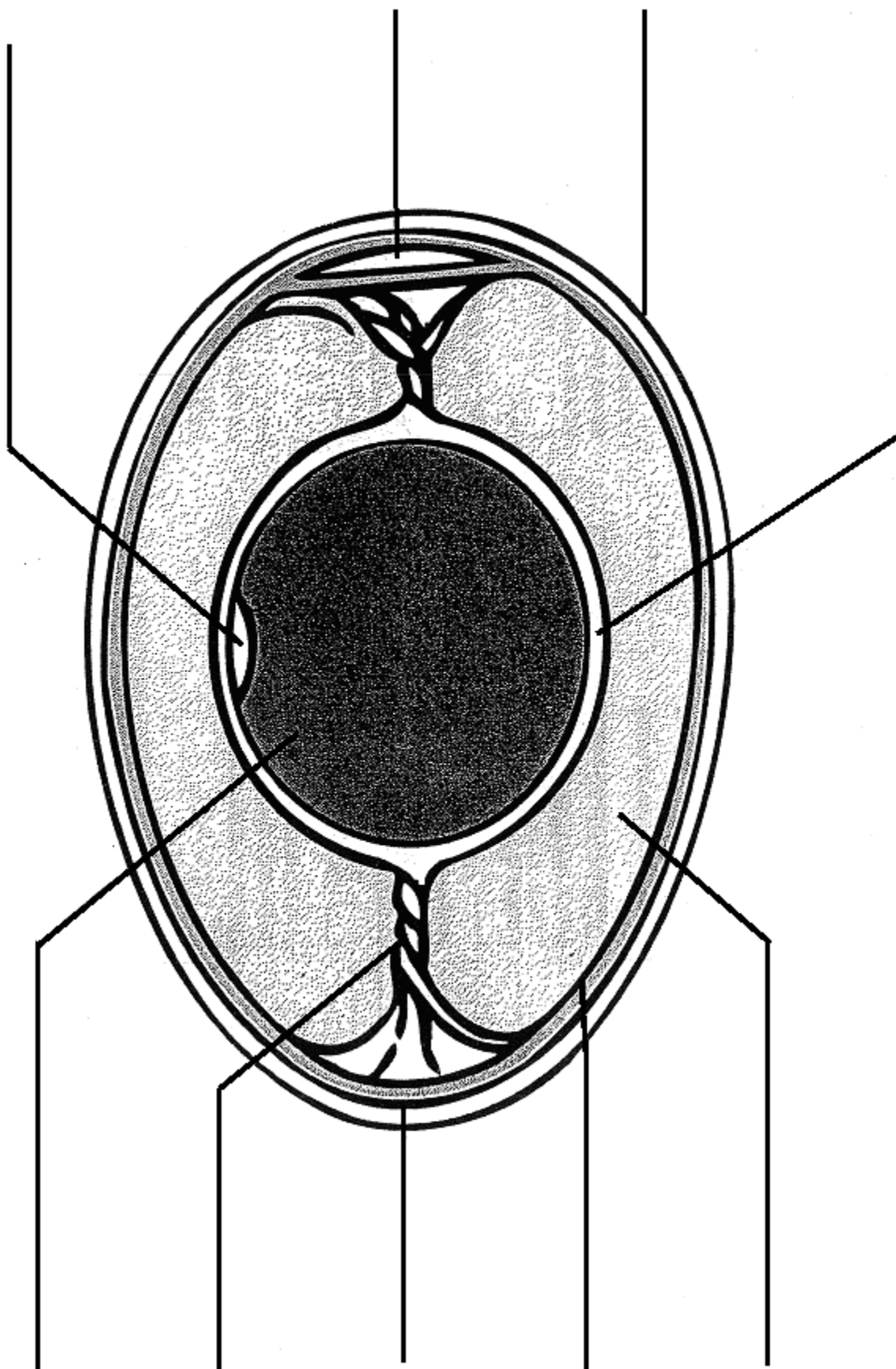
Make a Connection



Directions: Listed in the first column are vocabulary words that you will need to learn during our Incubation and Embryology unit.

In the second column, write a brief definition of each vocabulary word. In the third column, write a sentence that uses the vocabulary word and shows that you understand what it means.

Vocabulary Word	Definition	Sentence



Embryology Record Sheet

Date set

Day expected to hatch

Number eggs set: _____
Numbers eggs fertile: _____
Number eggs pipped: _____
Number eggs hatched: _____

Percent fertility = _____%
Percent hatchability = _____%
Number of fertile eggs/Number of eggs set
Hatch = _____%
Number of fertile eggs/Number of eggs set

Directions: Every time the eggs are turned, make an entry in each column. Make special notes if the class did anything other than turn the eggs, such as add water, candle or weigh the eggs, or other experiments and activities which could have affected the eggs.

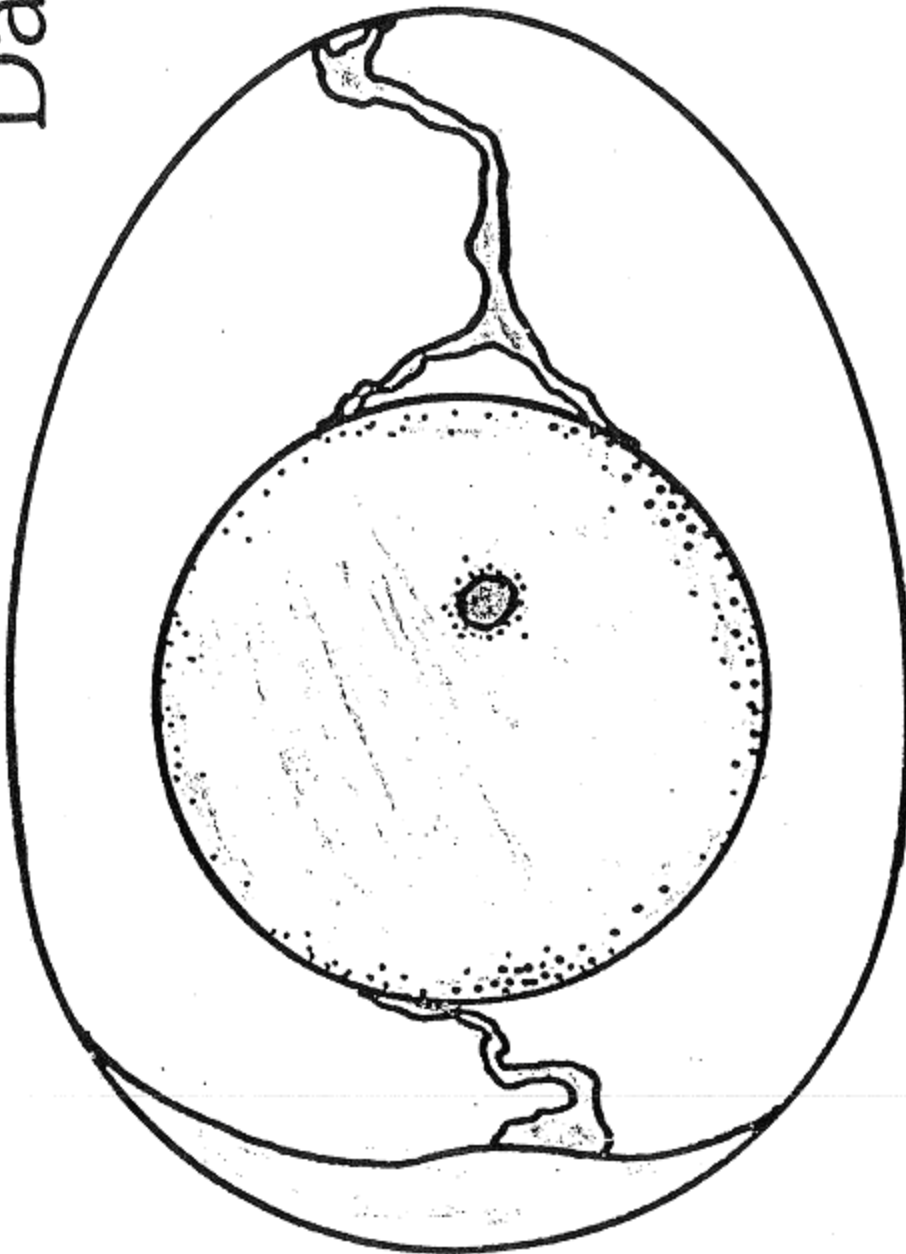
Day	Temperatures			Notes: mass of egg (grams), relative humidity, etc.
	In Room	In Incubator	In Brooder	
1				
2				
3				
4				
5				
6				
7				
8				
9				
10				
11				
12				
13				
14				
15				
16				
17				
18				
19				
20				
21				
22				
23				
24				
25				
26				

WHAT'S INSIDE?



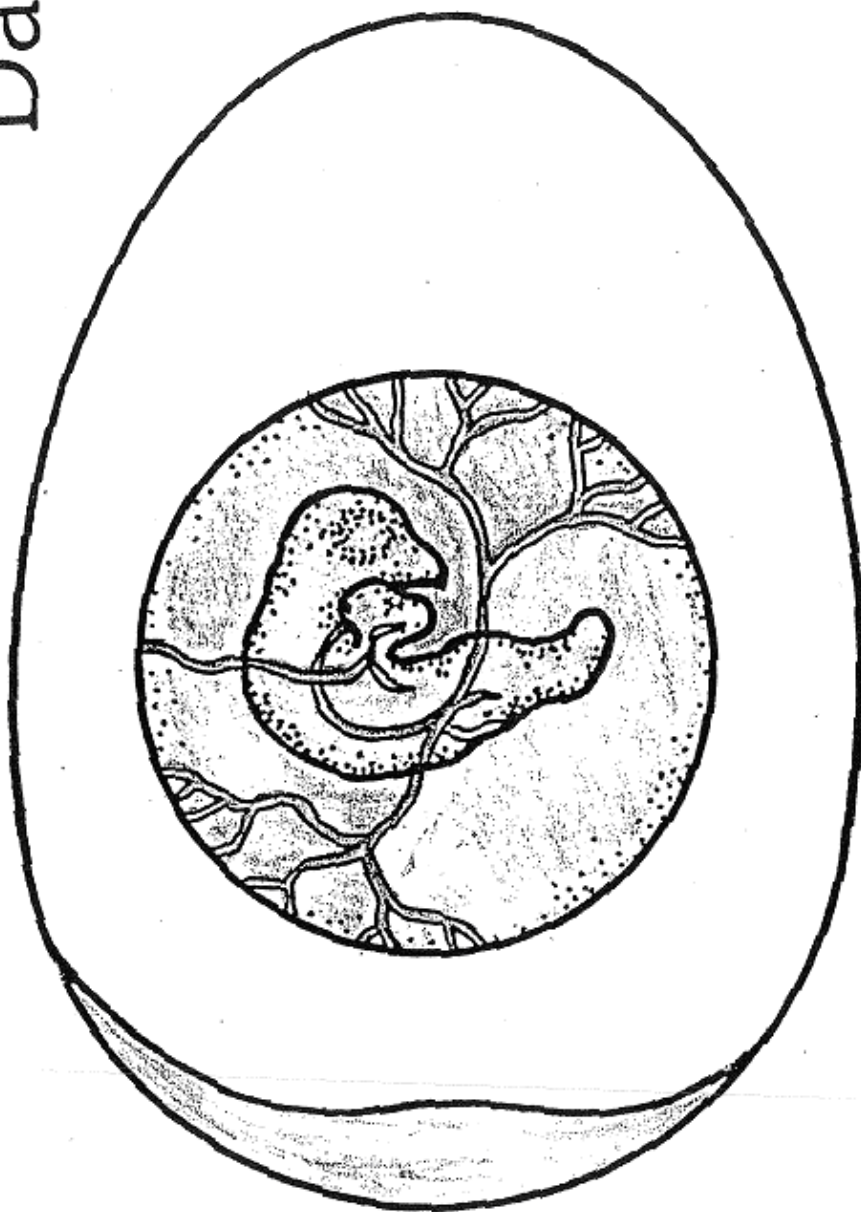
What is inside of this little eggshell?
A new baby chick! This story will tell.

Day 1



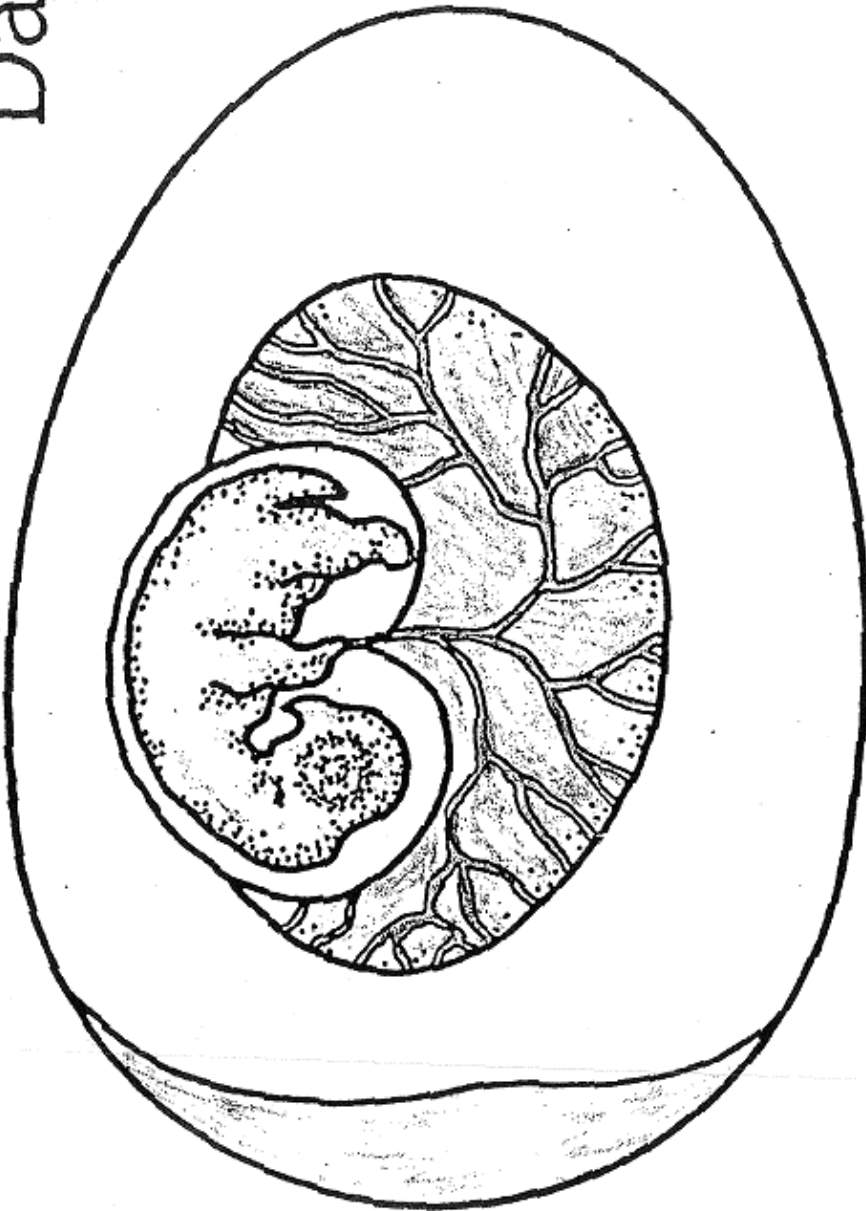
Baby Chick, baby chick, when will you hatch?
Did you begin with this little white patch?

Day 3



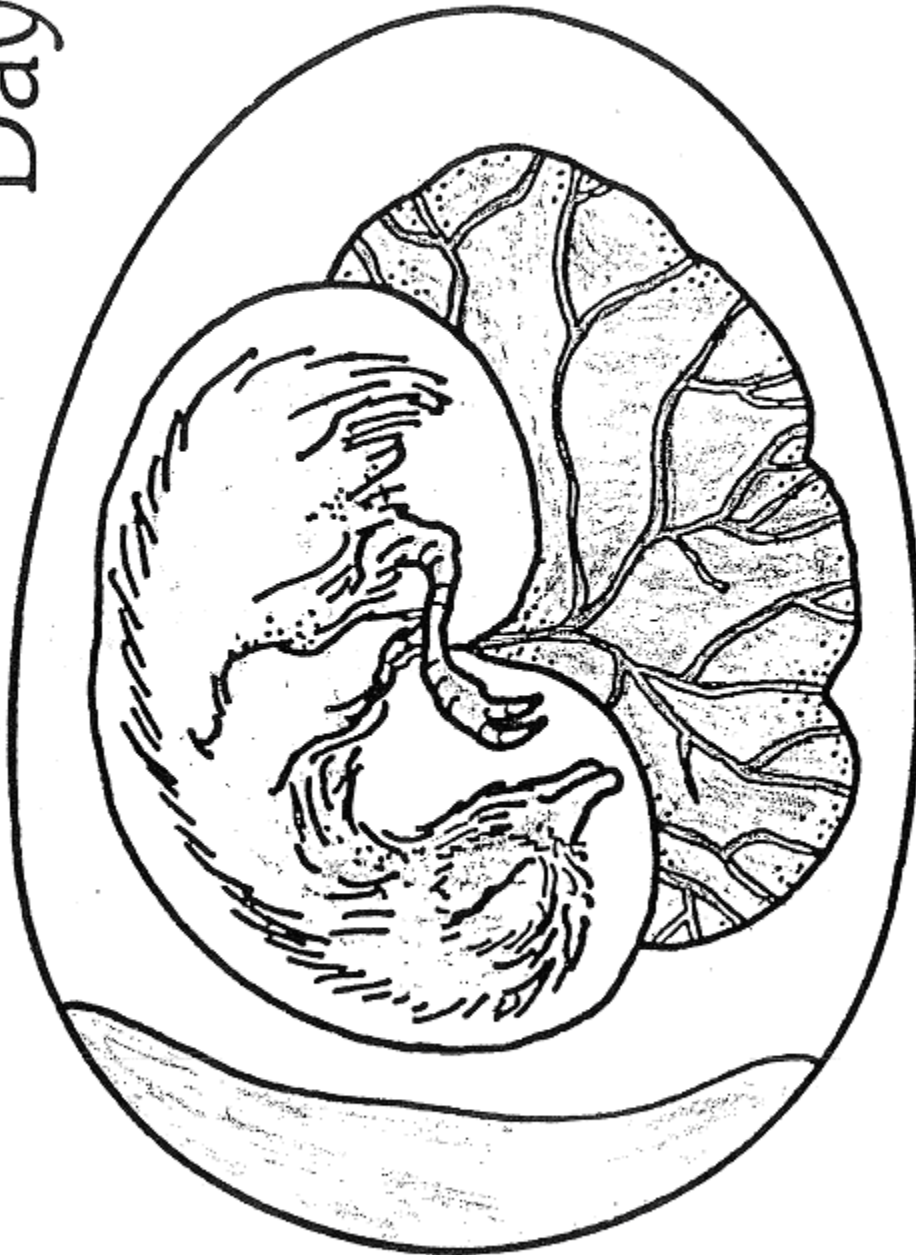
You're very tiny but warm as can be.
Your heart and your head we begin to see.

Day 6



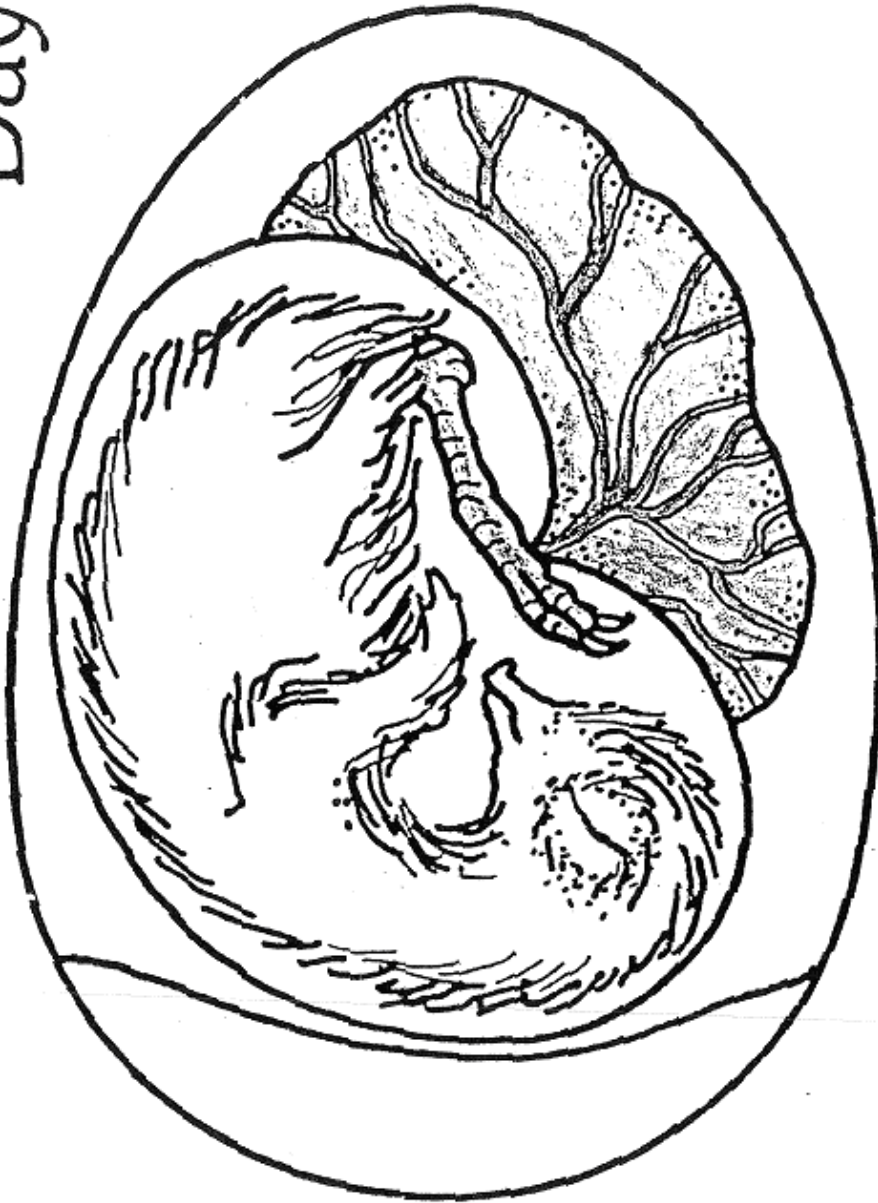
More days for growing, almost a week.
You now have two wings, two legs, and a beak.

Day 13



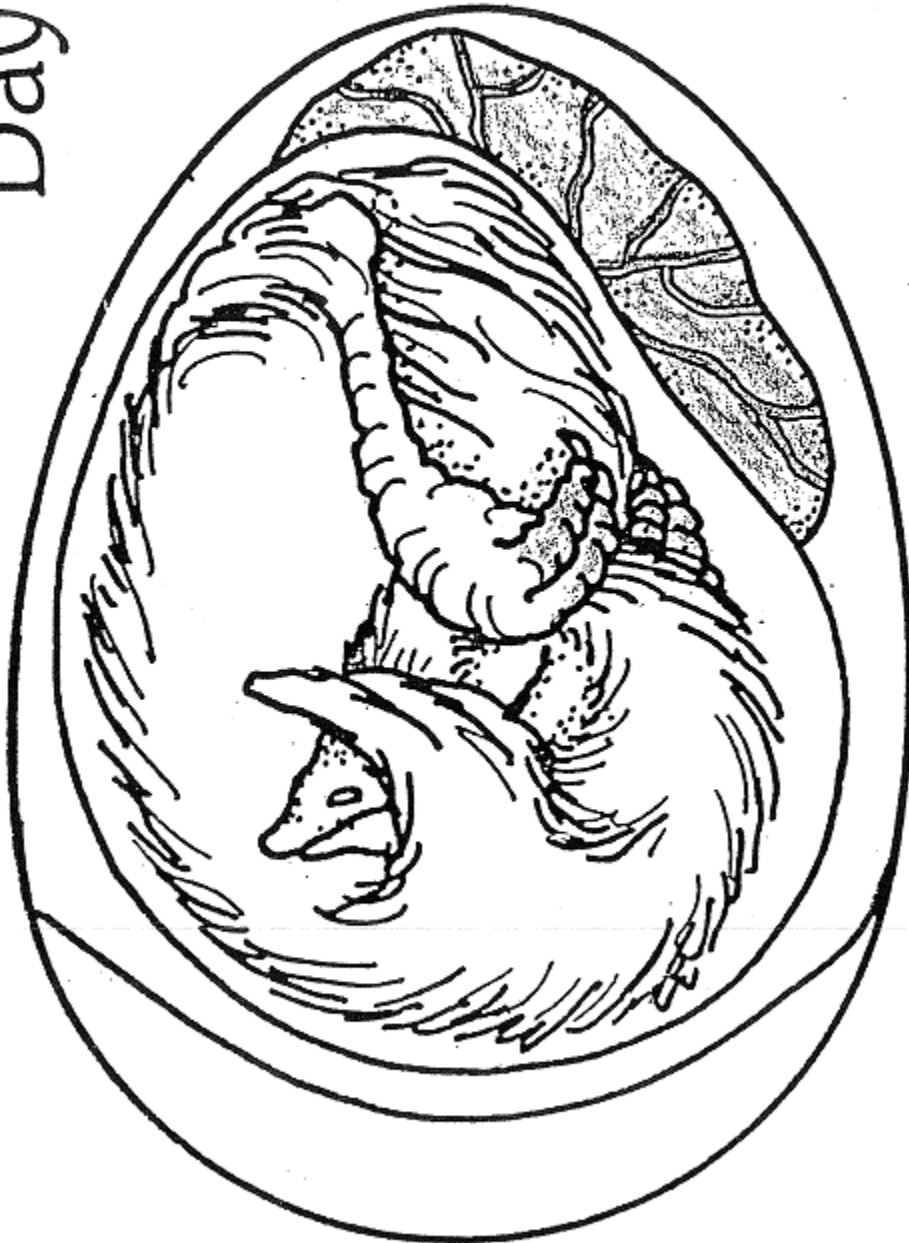
Soon you have feathers, and claws on your toes.
Oh, my, how fast a new baby chick grows!

Day 16



Bigger and bigger you grow every day.
Your food's almost gone. Not long can you stay.

Day 19



This shell is too small. You're too big to fit. You're just about ready to hatch out of it.

Day 21



Peck for awhile, then take a short sleep.
You work very hard and you're out. Peep! Peep!