

New York's State Symbols Concentration Game Rules

- Print and cut out 4 sets of state symbol cards for each group of 2 to 4 players. (11 symbols plus card back provided)
- Mix up the cards and turn all of them face-down on the playing table.
- Players take turns, one-at-a-time. Upon their turn, a player turns over two cards. If the cards match, the player removes and keeps the cards and turns over two more cards. If the cards do not match, they are turned face-down again and it is the next player's turn.
- The game continues until all of the cards have been matched.
- To determine the winner, all players count their matched pairs. The player with the greatest number of matched pairs wins.



Brook Trout
(state freshwater fish – 2006)



Eastern Bluebird
(state bird – 1970)



Sugar Maple
(state tree – 1956)



Beaver
(state mammal – 1975)



Eurypterid
(state fossil – 1984)



Striped Bass
(state saltwater fish – 2006)



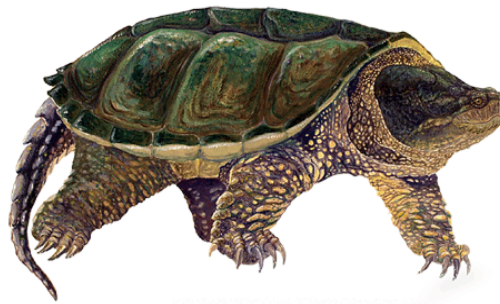
Bay Scallop
(state shell – 1988)



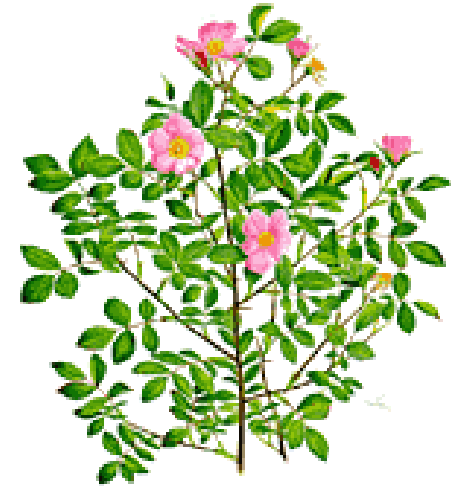
Garnet
(state gem – 1969)



Nine-Spotted Ladybird Beetle
(state insect – 1989)



Snapping Turtle
(state reptile – 2006)



Rose
(state flower – 1955)



New York State
**DEPARTMENT OF
ENVIRONMENTAL
CONSERVATION**

**New York's
State Symbols**

CONCENTRATION!



New York State
**DEPARTMENT OF
ENVIRONMENTAL
CONSERVATION**

**New York's
State Symbols**

CONCENTRATION!



New York State
**DEPARTMENT OF
ENVIRONMENTAL
CONSERVATION**

**New York's
State Symbols**

CONCENTRATION!



New York State
**DEPARTMENT OF
ENVIRONMENTAL
CONSERVATION**

**New York's
State Symbols**

CONCENTRATION!



New York State
**DEPARTMENT OF
ENVIRONMENTAL
CONSERVATION**

**New York's
State Symbols**

CONCENTRATION!



New York State
**DEPARTMENT OF
ENVIRONMENTAL
CONSERVATION**

**New York's
State Symbols**

CONCENTRATION!