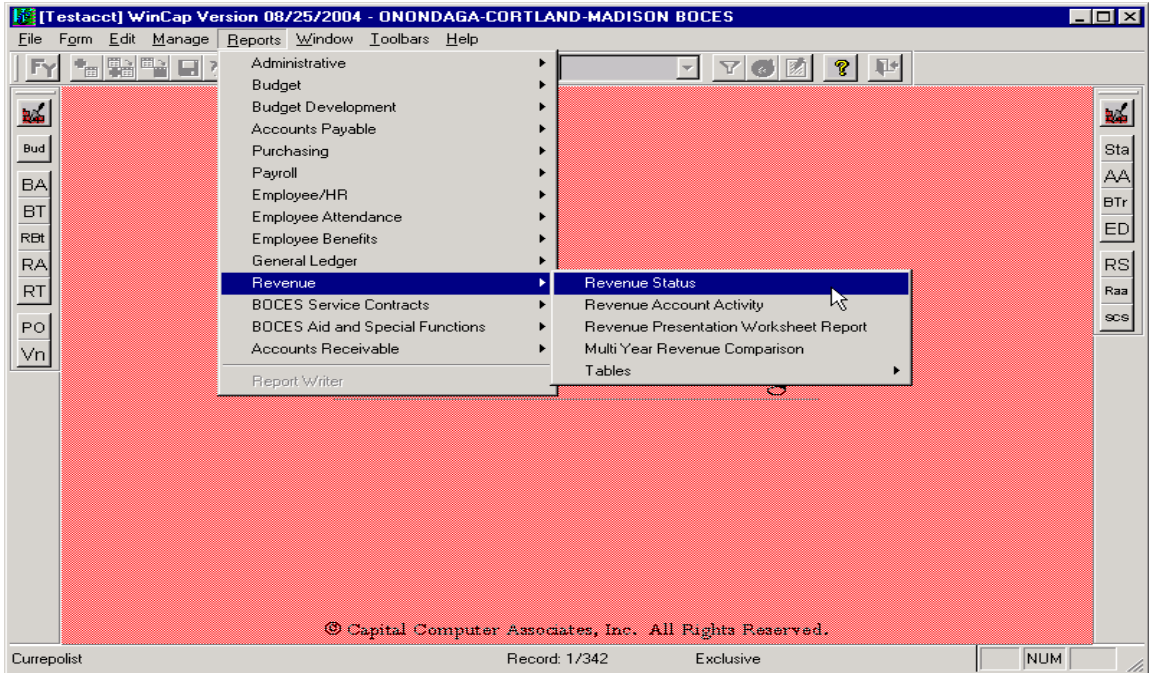
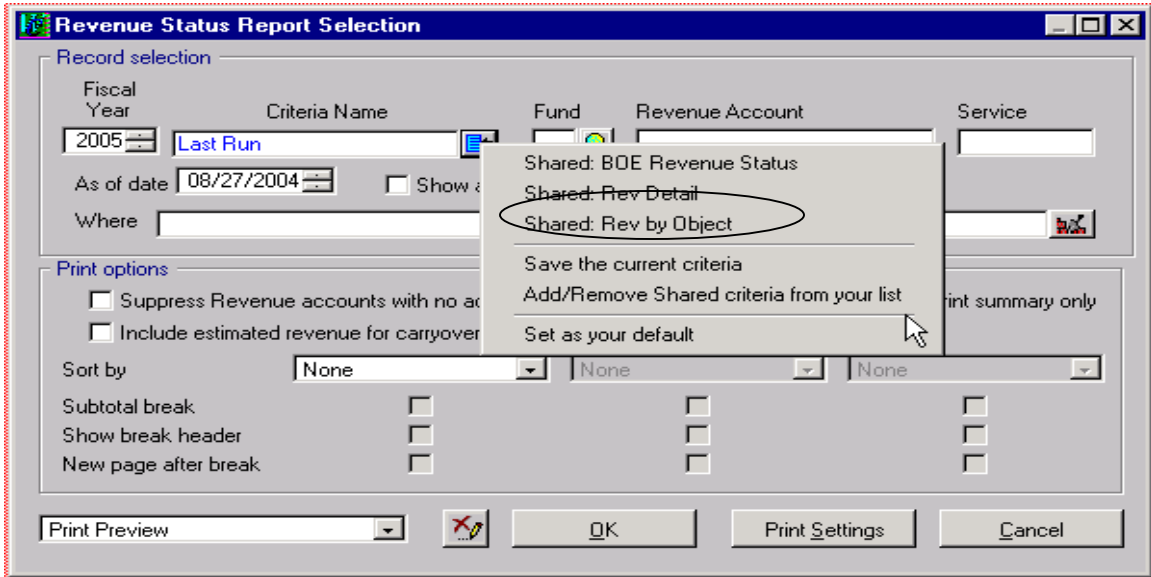


# WinCap Revenue Reports

The Revenue Status Report displays revenue posted for all revenue accounts.

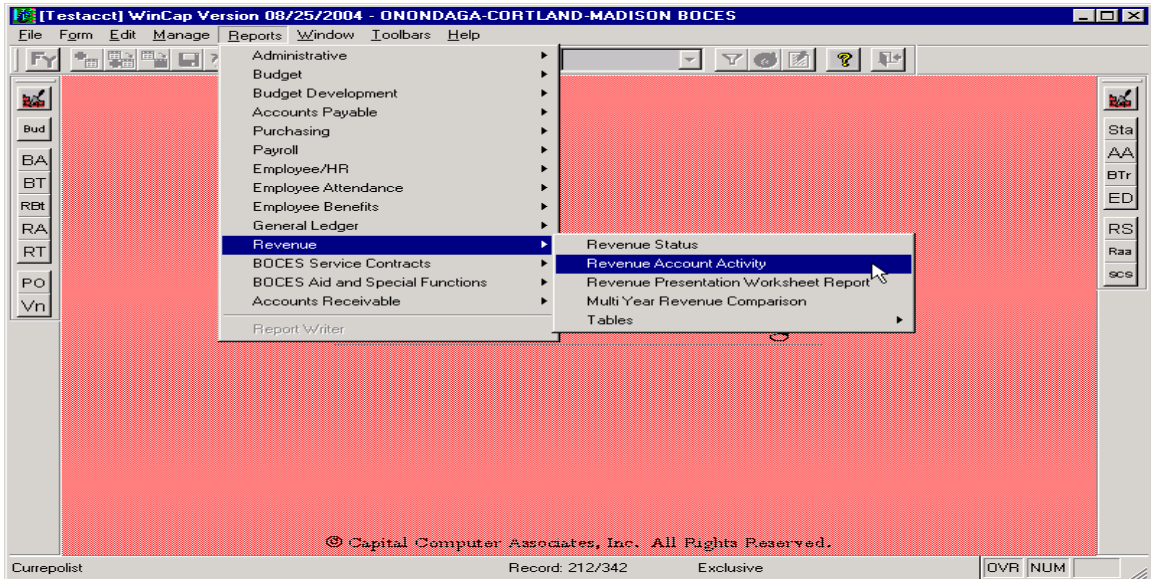


When the Revenue Status Report Selection opens, you have many different options when defining a report. OCM Boces has developed a few different reports that the criterion has been pre-defined for you. To run any of these reports you will simply select one of them from the list by clicking on the “Options” button.

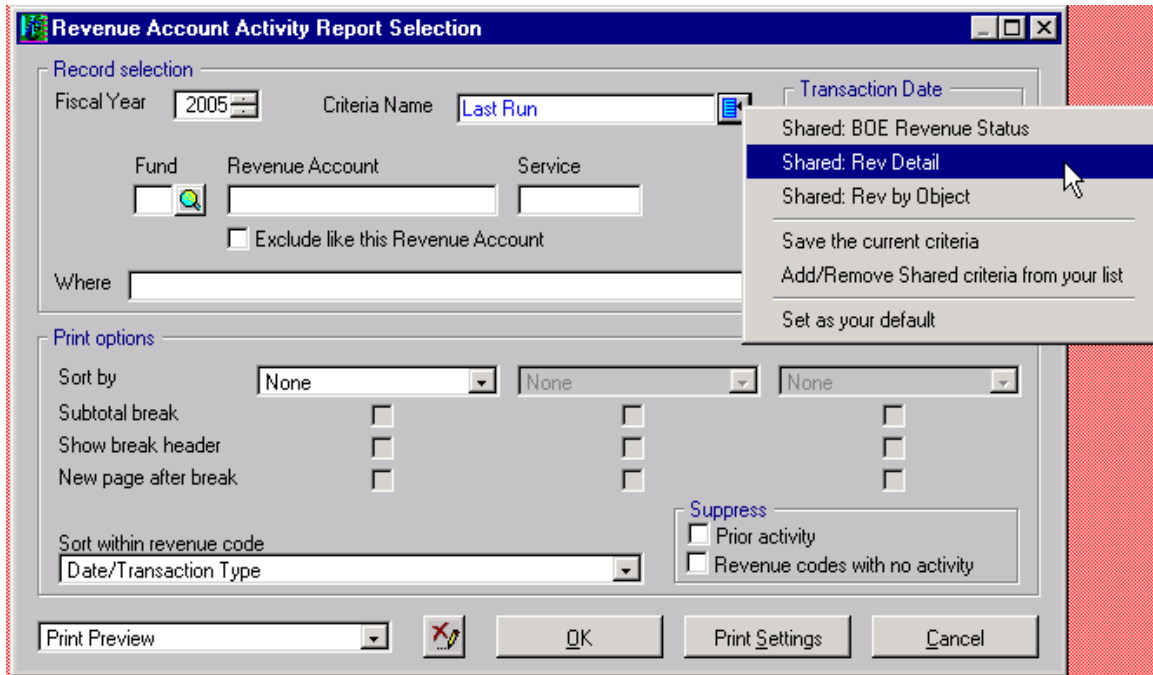


*Rev by Obj* - will provide by object code a summary of each Revenue Account's Original Estimate, Adjustments, Current Estimate, Year-to-Date, Anticipated Balance and Excess Revenue, with a Sub total by Coser and a grand total at the end of the report. (see attached report 1R)

The Revenue Account Activity Report displays the activity posted to revenue account(s).

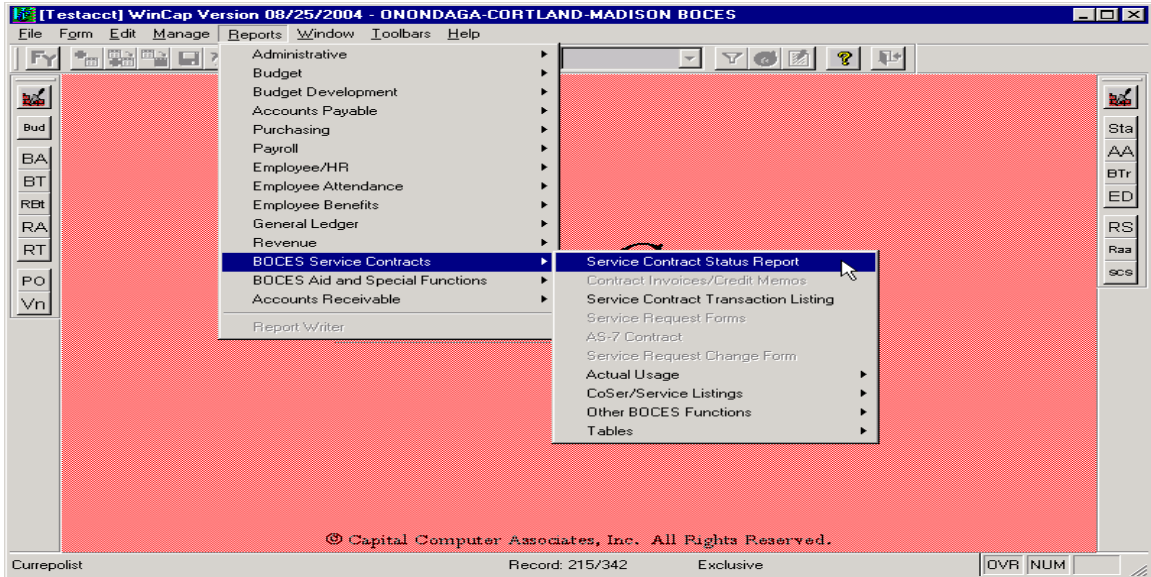


When the Revenue Account Activity Reports Selection opens, you have many different options when defining a report. OCM Boces has developed a few different reports that the criterion has been pre-defined for you. To run any of these reports you will simply select one of them from the list by clicking on the "Options" button.

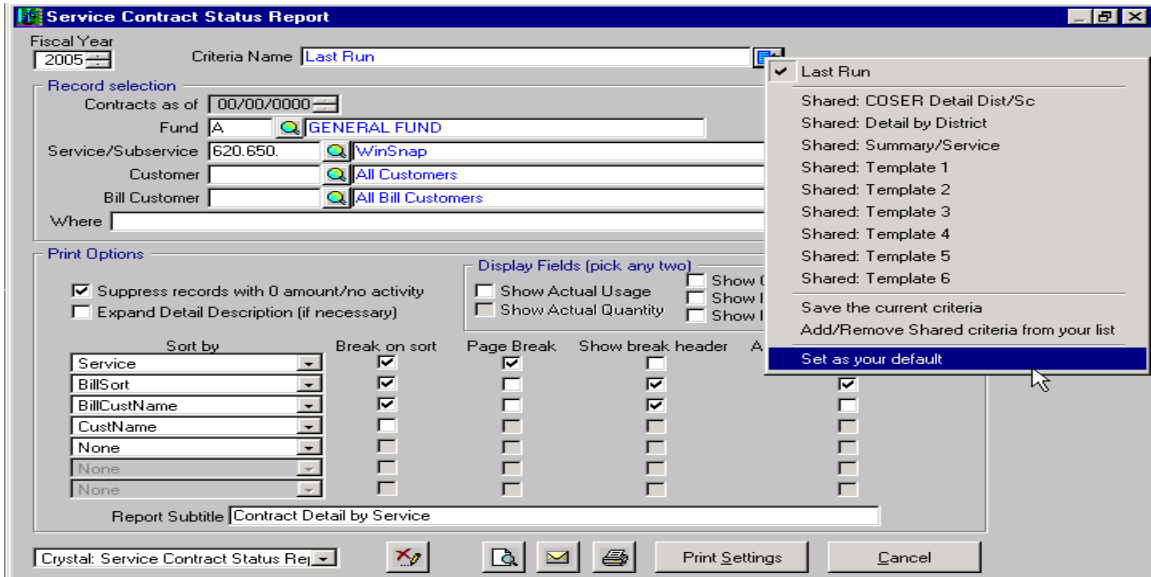


*Rev Detail* - will provide you with the detail that has taken place for the selected Revenue Accounts, with subtotals by service and a grand total at the end of the report. (See attached report 2R)

Service Contract Status Report displays Service/subservice information.



When the Service Contract Status Reports Selection opens, you have many different options when defining a report. OCM Boces has developed a few different reports that the criterion has been pre-defined for you. To run any of these reports you will simply select one of them from the list by clicking on the “Options” button.



*COSER Detail Dist/Sc* - will provide by Service detail of each Service/Subservice’s Initial Contract, Adjustments, Quantity, Unit Cost, Fixed Costs, and Current Amount, with subtotals by Service. (See attached report 3R)

*Detail by District* - will provide by customer detail of each Service/Subservice’s Initial Contract, Adjustments, Quantity, Unit Cost, Fixed Costs, and Current Amount, with subtotals by customer. (See attached report 4R)

*Summary/Service* - will provide by Service a summary of each Service/Subservice’s Initial Contract, Adjustments, Quantity, Unit Cost, Fixed Costs, and Current Amount, with a sub total by service. (See attached report 5R)