

**CONTACT
INFORMATION**

While you are at Open House, please stop in to Room C223 for further information on the program.

Can't stay?

Feel free to contact

Carol Corso 453-4620

or email

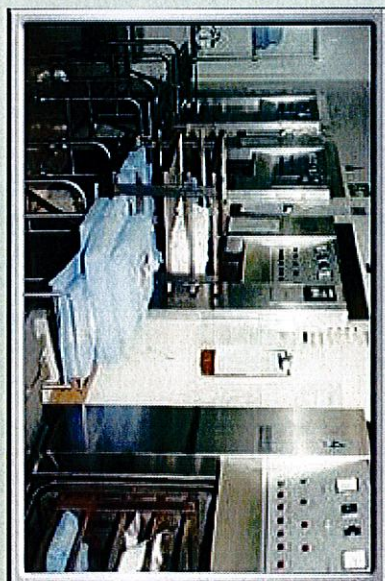
ccorso@ocmbooces.org

Hope to see you next semester!

OCM BOCES advises students, parents and the community that it does not discriminate on the basis of race, color, national origin, sex, disability or age in its programs and activities. Inquiries may be directed to the Director of Personnel, OCM BOCES, 6820 Thompson Road, Syracuse, NY 13211, (315) 433-2600.

OCM BOCES
Central Service Technician
Program
4500 Crown Road
Liverpool, NY 13090

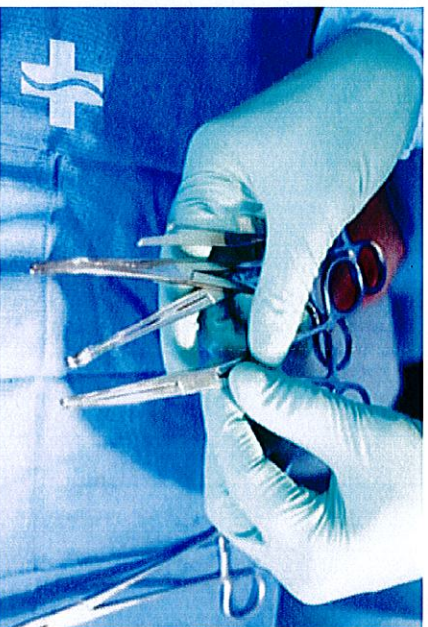
Tel: 315-453-4400
Fax: 315-451-4676



Facts you need to know

Program Description

This 678 hour program consists of 345 hours of theory (classroom) component, 263 hours of laboratory and clinical experience and 70 hours of work-based activities. Students will receive hands-on training in all Central Service areas that will be required for certification by New York State.

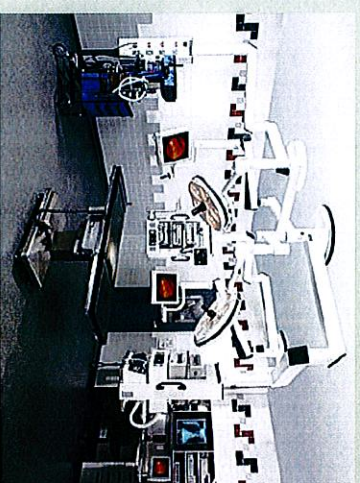


Program Objectives

- Have a clear understanding of role as a Central Service Technician, including methods of communication skills, teamwork and rules and regulations that govern this profession.
- Demonstrate knowledge of:
 - Medical Terminology related to this special field of practice.
 - Anatomy and Physiology as it relates to the role of the Central Service Technician.
 - Microbiology as it critically relates to the Central Service Technician.
 - All surgical instruments used in the field of practice, including all powered and non-powered instruments and flexible endoscopes.
 - The packaging and storage process of instruments and packs.
 - High and low temperature sterilization and chemical sterilization methods.
- Understand and demonstrate infection control and standard precautions. Demonstrate principles of surgical asepsis.
- Obtain, demonstrate and understand all aspects of the Central Service Technician role which includes tools for cleaning, decontamination and disinfection.
- Demonstrate and understand the management of patient care equipment.
- Have a clear understanding and knowledge of the importance of Quality Assurance in this field of practice.
- Understand and demonstrate ALL safety hazards relating to Central Service Operations.

Completion Requirements

- Maintain a 75% or higher academic average.
- Maintain 90% attendance.
- Successfully complete the 300+ hours of the clinical component.
- Successfully complete a clinical preceptorship at a health care facility.
- Demonstrate professional demeanor and follow the rules and regulations of this program.



Hours of Operation

Monday through Friday
8:00am to 3:00pm

Career Training Center
4500 Crown Road
Liverpool, New York 13090

Free parking provided for all students.

Main: 315-453-4455

