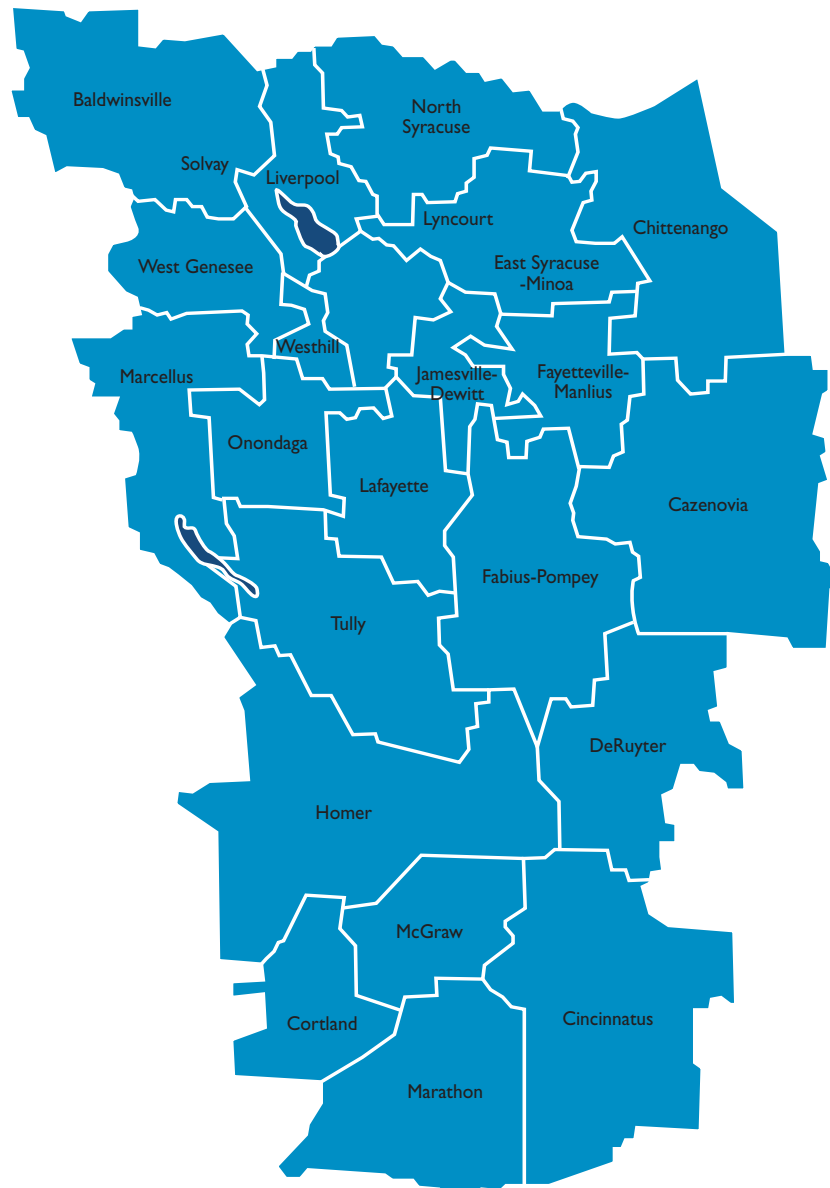


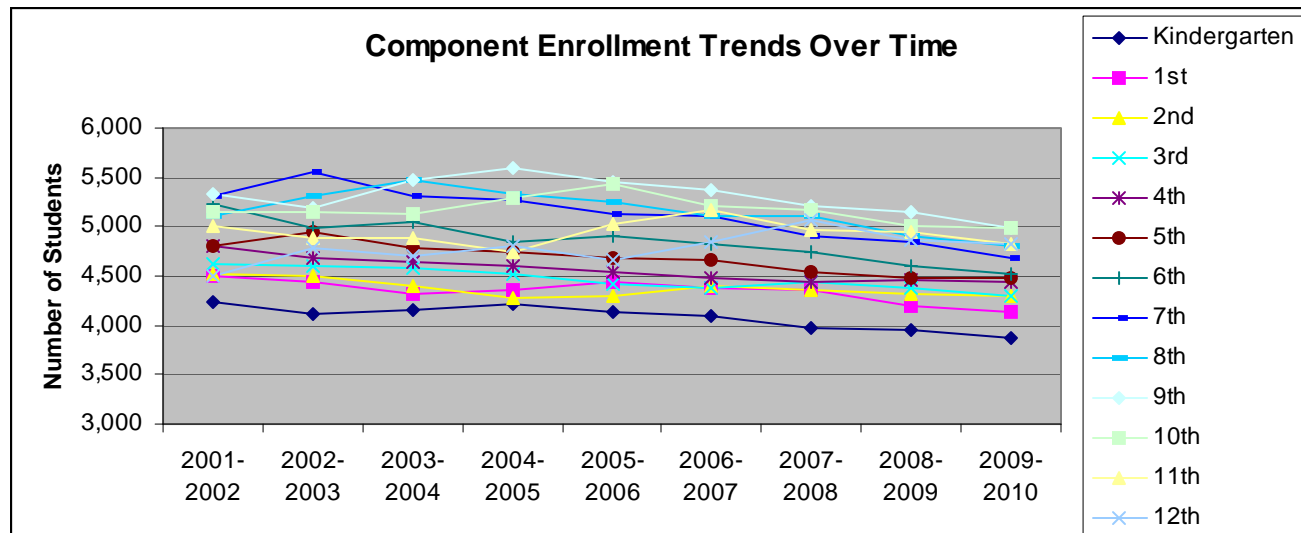


Onondaga-Cortland-Madison BOCES Annual Enrollment Report 2009-2010



2009-2010 OCM BOCES Annual Enrollment Report

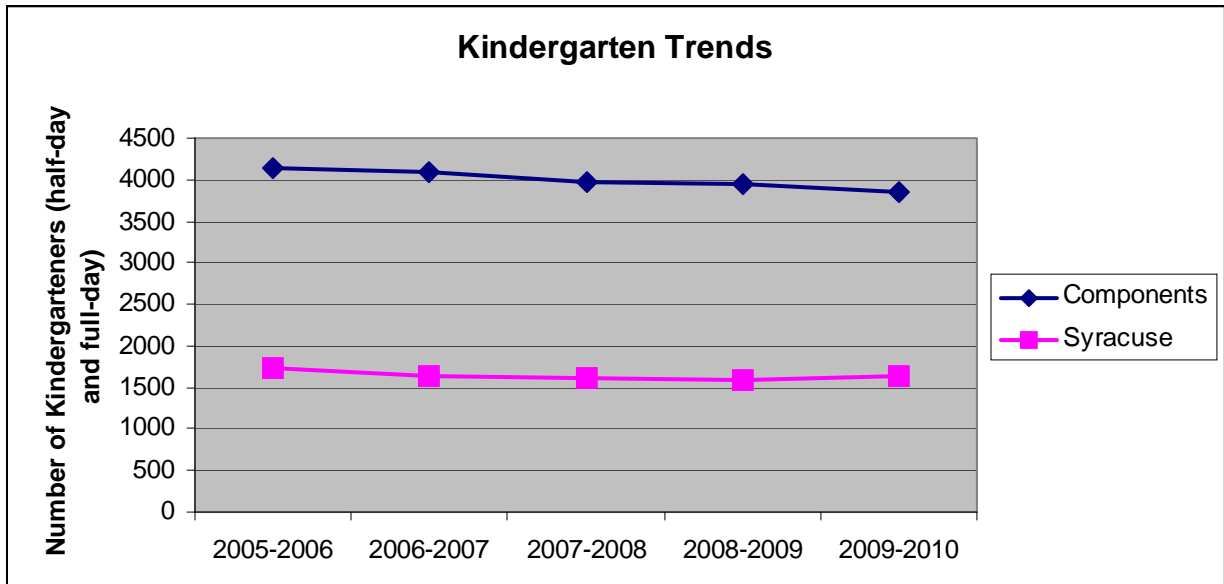
The K-12 regular school day enrollments for the OCM BOCES components and the Syracuse City School District, not including non-public and charter schools, was 79,470. This continues the decreasing trend of school-age population in Central New York. Enrollment has gone from a high of over 120,000 in the early 1970's to this year's low. Enrollment decreased at every grade level, K-12, by an average of 2%.



District	2003-2004	2004-2003	2005-2006	2006-2007	2007-2008	2008-2009	2009-2010
Baldwinsville	5960	6036	6030	6037	6013	5939	5931
Cazenovia	1805	1827	1809	1804	1782	1697	1673
Chittenango	2567	2491	2469	2425	2355	2278	2235
Cincinnatus	714	724	659	653	671	654	642
Cortland	2848	2833	2810	2897	2883	2827	2819
DeRuyter	508	490	527	536	485	459	433
East Syracuse-Minoa	3646	3543	3471	3513	3490	3474	3396
Fabius-Pompey	913	942	935	902	877	847	850
Fayetteville-Manlius	4623	4739	4771	4749	4752	4726	4610
Homer	2367	2288	2245	2300	2256	2245	2192
Jamesville-Dewitt	2717	2774	2845	2943	2961	2961	2905
Lafayette	1003	975	968	929	901	880	897
Liverpool	8521	8341	8180	8078	7997	7807	7656
Lyncourt	339	323	348	397	482	470	468
Marathon	1012	974	939	950	905	851	826
Marcellus	2147	2175	2119	2093	2093	2049	1993
McGraw	618	604	588	591	579	592	588
North Syracuse	9987	9979	9967	10111	9949	9721	9580
Onondaga Central	1025	1048	1010	1001	987	978	973
Solvay	1747	1793	1704	1719	1767	1630	1604
Tully	1238	1235	1220	1224	1166	1156	1144
West Genesee	5153	5058	5144	5205	5205	5186	5051
Westhill	2048	2000	2016	2025	1984	1968	1900
TOTAL COMPONENTS	63506	63192	62774	63082	62540	61395	60366
Syracuse	21298	20868	21234	20549	20021	19988	20401
Total	84804	84060	84008	83631	82561	81383	80767
Diocese*	5764	5196	4537	5782	5402	2911	3298

Kindergarten and preK

The trend for Kindergarten mirrors the trend of overall K-12 enrollment: a steady decrease.



District	Pre-K	K half day	K Full Day	K Total
Baldwinsville	0	313	35	348
Cazenovia	0	0	102	102
Chittenango	0	123	0	123
Cincinnatus	40	0	43	43
Cortland	150	0	220	220
DeRuyter	27	0	24	24
East Syracuse-Minoa	170	0	227	227
Fabius-Pompey	0	0	66	66
Fayetteville-Manlius	0	248	0	248
Homer	0	0	148	148
Jamesville-Dewitt	0	0	214	214
Lafayette	15	0	67	67
Liverpool	181	0	536	536
Lyncourt	22	0	37	37
Marathon	20	0	49	49
Marcellus	0	104	0	104
McGraw	0	0	37	37
North Syracuse	475	600	41	641
Onondaga Central	16	0	74	74
Solvay	43	0	94	94
Tully	0	0	60	60
West Genesee	27	282	0	282
Westhill	0	118	0	118
TOTAL COMPONENTS	1186	1788	2074	3862
Syracuse	1253	0	1631	1631
Total	2439	1788	3705	5493
Diocese*	505	0	379	379
Charter Schools**	0	0	0	0
Non Public Schools***	199	14	77	91
TOTAL	3143	1802	4161	5963

2009-2010 Enrollments by

K-12	K	I	2	3	4	5	6	ungrd. Elem.	7	8
Baldwinsville	348	386	486	413	435	481	442	15	470	461
Cazenovia	102	96	108	135	128	128	123	0	141	134
Chittenango	123	174	144	140	175	145	186	11	175	174
Cincinnatus	43	57	45	52	49	37	49	0	50	49
Cortland	220	198	244	212	197	199	201	7	219	212
DeRuyter	24	30	24	26	31	40	30	0	37	36
East Syracuse-Minoa	227	223	222	243	237	237	251	0	259	289
Fabius-Pompey	66	41	54	57	51	70	66	0	60	76
Fayetteville-Manlius	248	318	318	294	352	342	349	17	338	417
Homer	148	138	137	168	157	162	170	0	172	168
Jamesville-Dewitt	214	206	215	219	217	219	206	4	219	217
Lafayette	67	59	64	68	65	65	62	0	66	58
Liverpool	536	541	569	538	560	584	586	23	592	555
Lyncourt	37	31	26	40	28	27	34	1	43	37
Marathon	49	53	53	52	53	62	70	2	55	67
Marcellus	104	158	136	127	149	153	157	4	173	135
McGraw	37	53	39	37	38	42	42	0	37	55
North Syracuse	641	650	641	743	739	719	699	35	719	811
Onondaga Central	74	80	66	65	65	67	68	0	81	74
Solvay	94	106	110	90	96	109	109	0	115	112
Tully	60	77	56	88	80	76	89	0	88	103
West Genesee	282	346	398	353	377	380	378	2	422	427
Westhill	118	123	144	131	153	130	162	0	149	144
TOTAL COMPONENTS	3862	4144	4299	4291	4432	4474	4529	121	4680	4811
Syracuse	1631	1613	1640	1615	1635	1536	1429	97	1418	1502
Total	5493	5757	5939	5906	6067	6010	5958	218	6098	6313
Diocese*	379	305	278	277	303	273	286	152	138	136
Charter Schools**	0	0	0	0	0	0	0	0	44	65
Non Public Schools***	91	90	79	103	96	82	82	0	222	216
TOTAL	5963	6152	6296	6286	6466	6365	6326	370	6502	6730

* Diocese enrollments include schools in Onondaga County only.

** Charter schools includes the Syracuse Academy of Science.

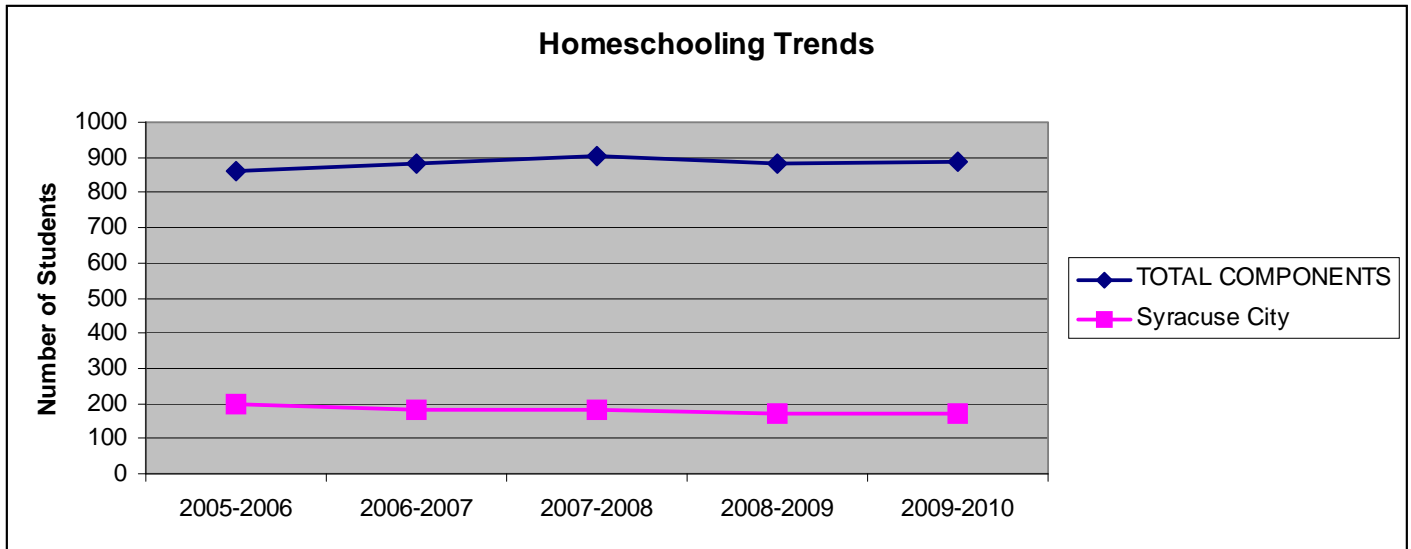
*** Non-publics includes: Abundant Life Academy, Blessed Sacrament, Cortland Christian Academy, Faith Heritage, Jowonio School, Living Word Academy, Manlius Pebble Hill, Syracuse Hebrew Day, and CBA.

by District and Grade

9	10	11	12	ungrd. Sec.	Total Reg School	BOCES Full Day	Incarcerated	Other District & State	Total K-12
482	496	476	493	15	5899	31	0	1	5931
145	144	142	137	7	1670	2	0	1	1673
182	196	206	188	9	2228	7	0	0	2235
46	49	45	47	0	618	23	0	1	642
203	214	196	187	0	2709	70	18	22	2819
33	33	35	38	3	420	13	0	0	433
269	312	286	299	0	3354	39	1	2	3396
70	76	65	86	0	838	12	0	0	850
371	417	400	379	29	4589	16	3	2	4610
205	184	161	169	0	2139	23	1	29	2192
228	236	226	229	13	2868	13	17	7	2905
91	87	70	55	0	877	17	1	2	897
618	596	585	601	24	7508	143	0	5	7656
0	0	0	0	0	304	3	0	161	468
65	63	68	75	1	788	38	0	0	826
179	162	182	167	3	1989	4	0	0	1993
58	57	40	42	0	577	11	0	0	588
798	789	710	750	37	9481	89	1	9	9580
86	72	84	75	0	957	14	0	2	973
175	145	141	168	1	1571	30	1	2	1604
99	93	103	97	0	1109	27	1	7	1144
405	409	437	398	3	5017	34	0	0	5051
170	155	158	147	0	1884	16	0	0	1900
4978	4985	4816	4827	145	59394	675	44	253	60366
2015	1535	1168	1040	202	20076	0	246	79	20401
6993	6520	5984	5867	347	79470	675	290	332	80767
120	146	140	161	204	3298	0	0	0	3298
70	59	50	53	0	341	0	0	0	341
240	245	259	253	93	2151	0	0	0	2151
7423	6970	6433	6334	644	85260	675	290	332	86557

Homeschooling

There don't seem to be any significant trends with the homeschooled population. Homeschooling numbers hare remaining relatively steady.



District	# of Households	K-6	7-12	Total
Baldwinsville	34	43	77	120
Cazenovia	29	35	24	59
Chittenango	12	11	8	19
Cincinnatus	27	16	11	27
Cortland	20	18	17	35
DeRuyter	16	20	19	39
East Syracuse-Minoa	14	17	12	29
Fabius-Pompey	10	21	12	33
Fayetteville-Manlius	26	24	18	42
Homer	30	39	21	60
Jamesville-Dewitt	5	2	7	9
Lafayette	21	21	28	49
Liverpool	59	30	29	59
Lyncourt	2	3	0	3
Marathon	6	5	4	9
Marcellus	17	17	15	32
McGraw	5	6	5	11
North Syracuse	125	61	64	125
Onondaga Central	17	15	11	26
Solvay	4	6	1	7
Tully	18	25	14	39
West Genesee	23	19	15	34
Westhill	10	4	17	21
TOTAL COMPONENTS	530	458	429	887
Syracuse City	100	100	73	173