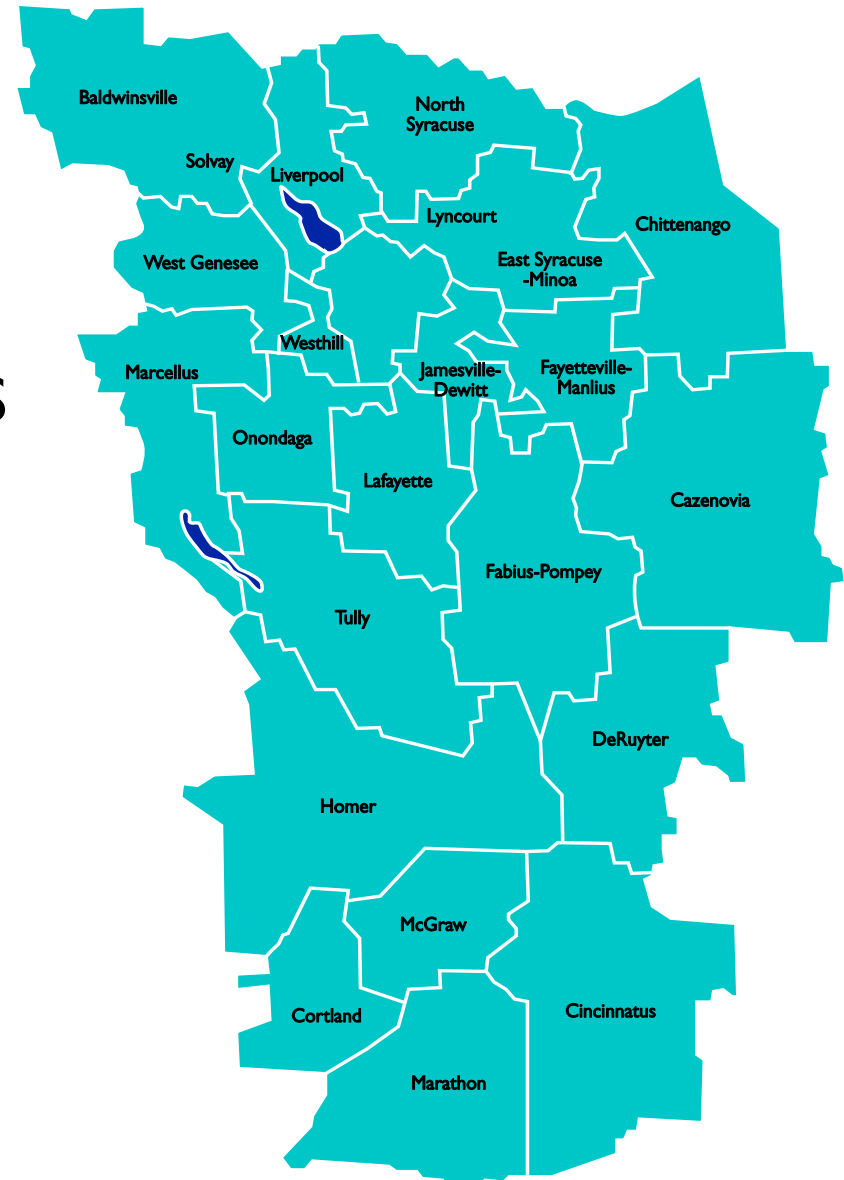
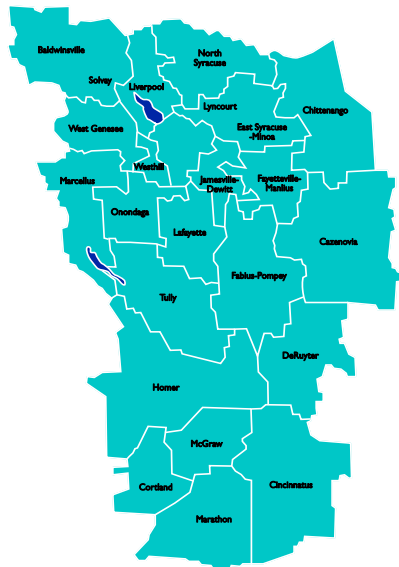


Onondaga-Cortland-Madison BOCES Annual Enrollment Report 2011-2012





2011-2012 OCM BOCES Annual Enrollment Report

The K-12 *regular school day* enrollments for the OCM BOCES components and the Syracuse City School District, not including non-public and charter schools, was 78,302. This is less than last year's enrollment of 78,494. This is a continuation of the decreasing trend of school-age population in Central New York over the past decade. This report represents a compilation of the BEDS data that districts submit each year to the State Education Department. These data were gathered from the BEDS data provided by districts and schools in late October. The report is meant to serve as a resource for superintendents.

Caution should be employed when drawing conclusions from these data. The State Education Department has changed the way that they collect these data from districts. Although every effort has been made to ensure comparability between the old and new systems, it is important to understand that the data collection method has changed and that it could contribute to variations in the data. In particular, the way in which districts report pre-K and ungraded students with disabilities has changed.

Definitive conclusions about charter school enrollment and non-public enrollment may be problematic because not all of these schools share their data with us. Additionally, whether these schools provide their data sometimes varies by year. We make repeated requests but some schools do not share their data with us.

For additional copies or information regarding this report contact Jeff Craig, Assistant Superintendent of Instructional Support Services at 315.433.2627 or jcraig@ocmboces.org.

Onondaga-Cortland-Madison Counties
Board of Cooperative Educational Services
PO Box 4754
6820 Thompson Road
Syracuse, NY 13221-4754
(v) 315.433.2600 (f) 315.434.9347
www.ocmboces.org

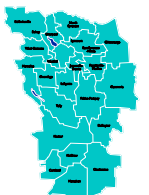
2011-2012 Regular Day Enrollments by District and Grade

K-12	K	I	2	3	4	5	6	7	8	9	10	11	12	ungrd.	Total Reg School
Baldwinsville	362	398	392	390	417	428	462	511	472	482	457	473	488	4	5736
Cazenovia	76	87	107	92	112	145	126	136	123	145	139	137	138	0	1563
Chittenango	144	146	138	167	147	145	166	140	176	182	177	159	192	1	2080
Cincinnatus	50	57	40	59	40	50	51	40	56	50	46	40	41	1	620
Cortland	219	246	230	227	252	233	222	229	213	213	209	200	210	3	2906
DeRuyter	31	28	23	27	30	25	29	41	30	39	26	29	35	0	393
East Syracuse-Minoa	257	226	232	234	226	243	244	245	262	273	307	270	319	10	3348
Fabius-Pompey	47	43	65	41	49	58	56	69	69	58	77	66	74	0	772
Fayetteville-Manlius	210	271	269	325	340	312	367	363	362	352	435	374	408	0	4388
Homer	155	154	167	138	149	170	161	185	187	198	170	175	181	6	2196
Jamesville-Dewitt	188	200	232	211	232	224	238	243	237	245	223	238	223	13	2947
Lafayette	66	65	68	67	63	69	63	70	61	64	70	80	72	0	878
Liverpool	578	536	545	542	567	536	560	599	557	615	599	610	589	20	7453
Lyncourt	29	38	36	25	27	40	32	33	38	1	0	0	0	0	299
Marathon	63	42	45	44	51	50	55	62	74	53	67	55	76	2	739
Marcellus	122	134	125	126	138	135	154	164	164	167	136	176	159	0	1900
McGraw	40	36	37	53	40	34	36	41	45	38	49	51	49	0	549
North Syracuse	609	653	712	671	656	770	769	744	724	714	809	764	754	50	9399
Onondaga Central	65	67	74	79	68	65	60	77	72	80	79	74	72	5	937
Solvay	107	99	88	109	107	95	109	119	110	172	160	149	148	12	1584
Tully	65	64	58	74	56	90	82	77	95	88	91	103	94	2	1039
West Genesee	269	294	332	362	400	377	401	406	395	433	448	408	424	4	4953
Westhill	111	129	148	130	146	137	154	133	157	159	149	170	146	0	1869
TOTAL COMPONENTS	3863	4013	4163	4193	4313	4431	4597	4727	4679	4821	4923	4801	4892	133	58548
Syracuse	1695	1598	1622	1578	1565	1572	1502	1436	1396	1859	1522	1108	1091	210	19754
Total	5558	5611	5785	5771	5878	6003	6099	6163	6075	6680	6445	5909	5983	343	78302
Diocese*	387	231	249	251	235	228	233	105	109	134	125	111	139	0	2544
Charter Schools**	146	122	134	90	77	120	127	153	156	69	68	79	52	0	1393
Non Public Schools***	149	120	121	109	115	126	126	190	220	249	235	236	241	0	2237
TOTAL	6240	6084	6289	6221	6305	6477	6585	6611	6560	7132	6878	6337	6415	343	84476

* Diocese enrollments include the Western Region of the Diocese of Syracuse.

** Charter schools include the Syracuse Academy of Science and the Southside Academy

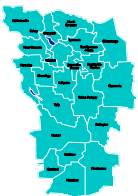
*** Non-publics include: Abundant Life Academy, Blessed Sacrament, Christian Brothers Academy, Cortland Christian Academy, Faith Heritage, Jowonio, Living Word Academy, Manlius Pebble Hill, Montessori School of Syracuse, Syracuse Hebrew Day School *Note: not all schools provide us with their data.*



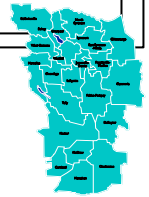
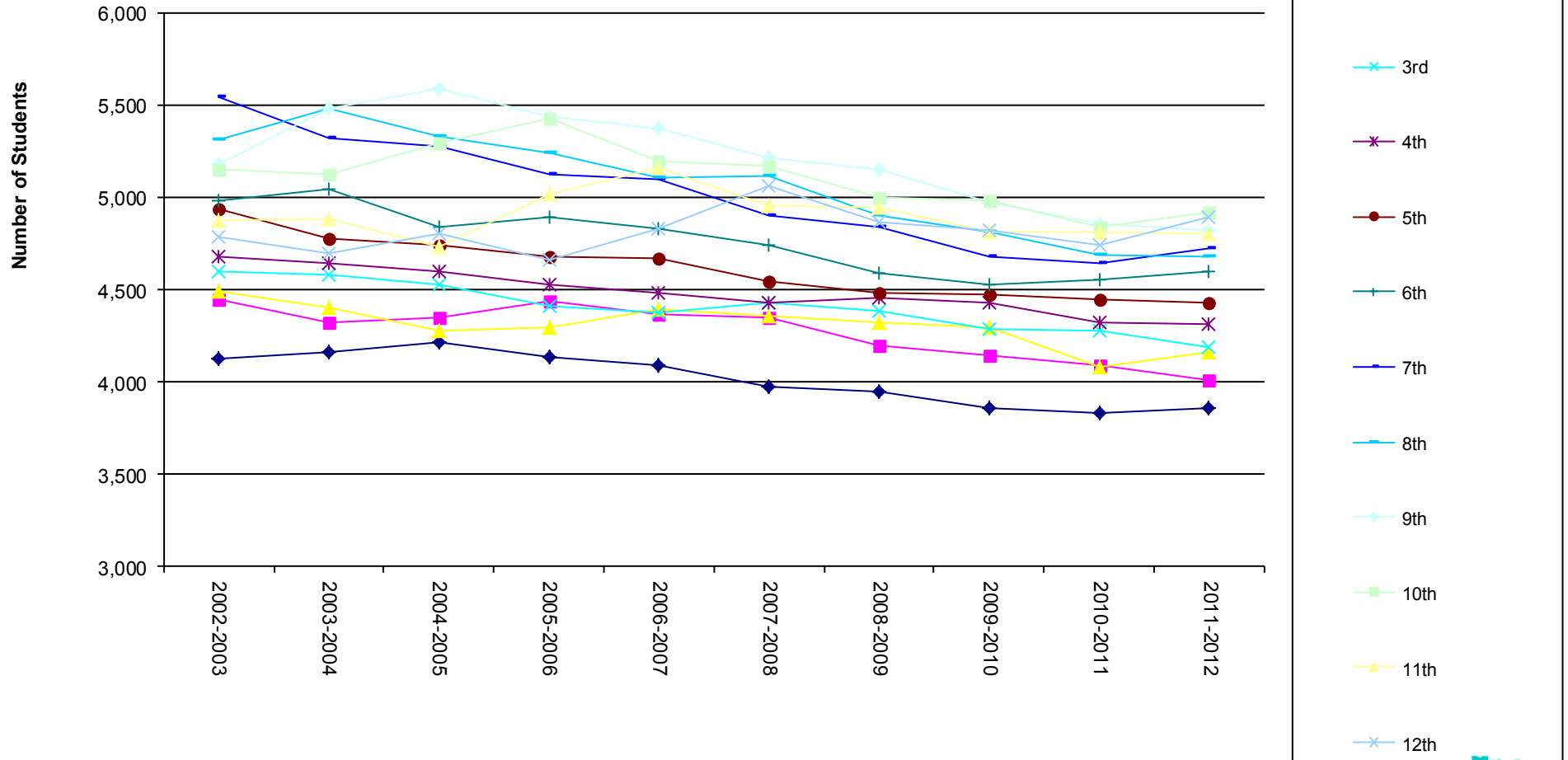
2011-2012 *Total* Enrollments by District and Grade

District	2003-2004	2004-2005	2005-2006	2006-2007	2007-2008	2008-2009	2009-2010	2010-2011	2011-2012
Baldwinsville	5960	6036	6030	6037	6013	5939	5931	5765	5816
Cazenovia	1805	1827	1809	1804	1782	1697	1673	1669	1568
Chittenango	2567	2491	2469	2425	2355	2278	2235	2239	2090
Cincinnatus	714	724	659	653	671	654	642	614	641
Cortland	2848	2833	2810	2897	2883	2827	2819	2802	2962
DeRuyter	508	490	527	536	485	459	433	425	403
East Syracuse-Minoa	3646	3543	3471	3513	3490	3474	3396	3362	3382
Fabius-Pompey	913	942	935	902	877	847	850	802	785
Fayetteville-Manlius	4623	4739	4771	4749	4752	4726	4610	4540	4409
Homer	2367	2288	2245	2300	2256	2245	2192	2208	2314
Jamesville-Dewitt	2717	2774	2845	2943	2961	2961	2905	2907	2985
Lafayette	1003	975	968	929	901	880	897	880	892
Liverpool	8521	8341	8180	8078	7997	7807	7656	7446	7552
Lyncourt	339	323	348	397	482	470	468	460	457
Marathon	1012	974	939	950	905	851	826	786	759
Marcellus	2147	2175	2119	2093	2093	2049	1993	1975	1910
McGraw	618	604	588	591	579	592	588	576	566
North Syracuse	9987	9979	9967	10111	9949	9721	9580	9509	9555
Onondaga Central	1025	1048	1010	1001	987	978	973	945	945
Solvay	1747	1793	1704	1719	1767	1630	1604	1516	1611
Tully	1238	1235	1220	1224	1166	1156	1144	1070	1066
West Genesee	5153	5058	5144	5205	5205	5186	5051	5022	4999
Westhill	2048	2000	2016	2025	1984	1968	1900	1889	1887
TOTAL COMPONENTS	63506	63192	62774	63082	62540	61395	60366	59407	59554
Syracuse	21298	20868	21234	20549	20021	19988	20401	20216	19935
Total	84804	84060	84008	83631	82561	81383	80767	79623	79489
Diocese*	5764	5196	4537	5782	5402	2911	3298	2646	2544

Total enrollment differs than *regular day* enrollment because it includes BOCES, Full Day, Incarcerated youth, and other state and district placements.

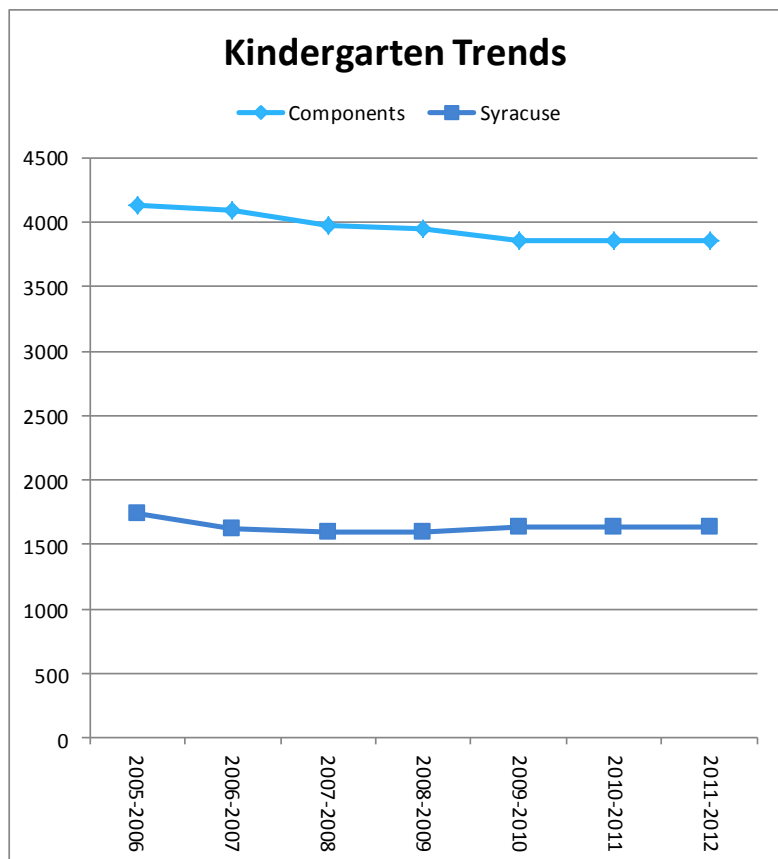


Component Enrollment Trends Over the Last Decade



Kindergarten

After trending down steadily for a number of years, Kindergarten enrollment appears to be leveling out.
Note: Full-day kindergarten numbers now include some special education students who have a full-day program in a district which may provide only half-day kindergarten — previously these students were not reported in this way.



District	K half day	K Full Day	K Total
Baldwinsville	323	39	362
Cazenovia	0	76	76
Chittenango	0	144	144
Cincinnatus	0	50	50
Cortland	0	219	219
DeRuyter	0	31	31
East Syracuse-Minoa	0	257	257
Fabius-Pompey	0	47	47
Fayetteville-Manlius	204	6	210
Homer	0	155	155
Jamesville-Dewitt	0	188	188
Lafayette	0	66	66
Liverpool	0	578	578
Lyncourt	0	29	29
Marathon	0	63	63
Marcellus	95	27	122
McGraw	0	40	40
North Syracuse	578	31	609
Onondaga Central	0	65	65
Solvay	0	107	107
Tully	0	65	65
West Genesee	257	12	269
Westhill	103	8	111
TOTAL COMPONENTS	1560	2303	3863
Syracuse			1695
Total	1560	2303	5558
Diocese*			231



Homeschooling

There has been a slight increase in the number of students reported as being homeschooled as compared to last year. When compared to the six-year mean, homeschool numbers are very close to the mean of 883 students (for the OCM BOCES component districts).

District	# of Households	K-6	7-12	Total
Baldwinsville	37	43	37	80
Cazenovia	27	46	18	64
Chittenango	14	12	10	22
Cincinnatus	11	13	12	25
Cortland	15	19	18	37
DeRuyter	15	27	13	40
East Syracuse-Minoa	11	7	13	20
Fabius-Pompey	11	19	11	30
Fayetteville-Manlius	30	34	23	57
Homer	35	27	32	59
Jamesville-Dewitt	7	5	6	11
Lafayette	16	16	17	33
Liverpool	49	44	36	80
Lyncourt	4	5	1	6
Marathon	6	7	4	11
Marcellus	13	17	11	28
McGraw	8	12	5	17
North Syracuse	56	59	44	103
Onondaga Central	12	10	11	21
Solvay	5	7	3	10
Tully	15	17	18	35
West Genesee	23	14	22	36
Westhill	8	2	11	13
TOTAL COMPONENTS	428	462	376	877
Syracuse City	102	105	93	198

